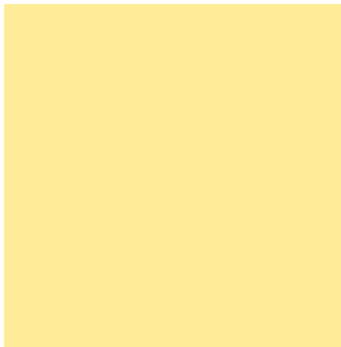
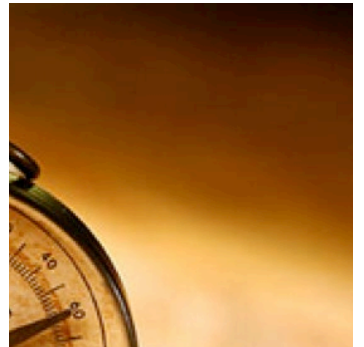


---

# Key Findings and Observations

---



**Erie West Deanery**  
**Diocese of Erie**

*May 2022*

---



# Table of Contents

- INTRODUCTION ..... 1**
- I. DEANERY DEMOGRAPHICS ..... 2**
  - GENERAL POPULATION..... 4
  - MAPS OF PARTICULAR POPULATION GROUPS..... 11
- II. DEANERY RELIGIOUS DATA..... 14**
- III. PARISH DATA..... 17**
  - ERIE WEST DEANERY PARISH STATISTICS ..... 17
  - ERIE WEST DEANERY SUMMARY OF PARISH ACCOUNTS..... 33
- IV. TOP TEN DATA POINTS ..... 50**



## INTRODUCTION

A Catholic pastor from the American Midwest was amazed by the potential impact that state-of-the-art demographic information could have on the ministry in his parish. He noted that new ministerial initiatives were often undertaken as “stabs in the dark,” “with our best guesses” or “with this or that person’s recommendation.” Now, after studying a demographic report on his parish, he felt as though he and his parish leaders had been given “new eyes” and could see what the parish was doing well and what changes needed to be made.

In April of 2016, the Diocese of Erie completed a pastoral planning process with the publication of a Pastoral Plan for all the parishes in the diocese. Meitler, a Catholic school, diocese, and parish national consulting firm based in Milwaukee, Wisconsin, was contracted to assist with the facilitation of the process. The development and completion of a plan was the first phase of planning in the diocese.

The implementation of the plan was the second phase. All 13 deaneries have been occupied with new configurations and efforts to improve the vitality of every parish. Six years later, the diocese is entering a third phase. The third phase will provide new demographic, religious, and parish information. It will also be an opportunity to discern new options and possibilities for the future based on that information.

The results of the demographic study will be published in a document titled **Key Findings and Observations Report**. Each deanery will receive its own report. The report will be presented to pastors at a meeting which will also provide an opportunity to discuss the significance for and impact of the information on parishes.

The full demographic information upon which the reports are based will also be made available by the diocese. These documents contain additional information about the people in the parish’s area of service. All this is done in the interest of providing pastors and parish leaders with “new eyes.”

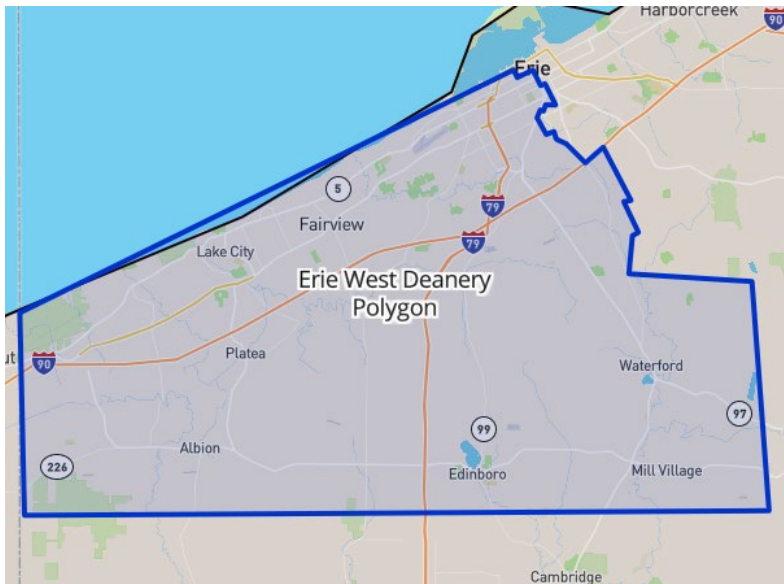
Pastors will be given resources to share the **Key Findings** report and other information with parish leaders and even parishioners, if desired. The initial meeting will be followed by a second gathering held within each deanery. Pastors and pastoral and finance council members will be invited to attend.

The second meeting will focus on a document titled **Options and Possibilities for the Future**. Each deanery will receive its own specialized report. Pastors and their councils will review and discuss suggestions for expanding ministries and creating efficiencies. This second report will include research on ministry preferences, media usage, and other helpful findings for parish use. The overall intended outcome from both meetings is for parishes to have a renewed hope for the growth of mission and ministry in the deanery. The parishes should be able to move into the future with greater knowledge about their parish and civic communities and have some concrete ideas for maximizing resources and expanding ministries.

May each parish look to the future with “new eyes” and a “new vision.”

## I. DEANERY DEMOGRAPHICS

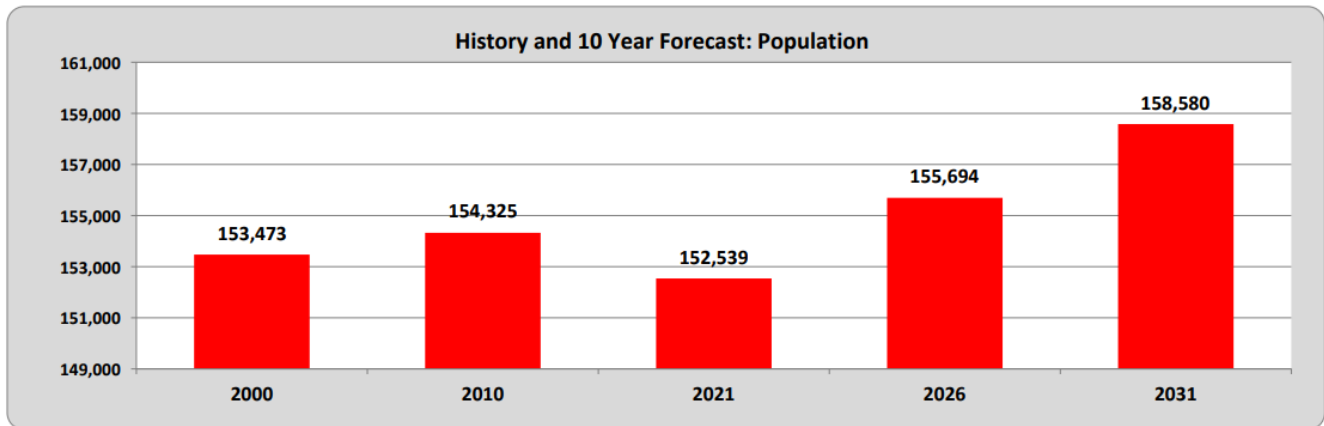
The boundaries used for the demographic studies are shown below. The boundaries are those used to define the Erie West Deanery. The information in the first section on “General Population” draws from this polygon.





## GENERAL POPULATION

**Figure 1**  
Population History with 5- and 10-Year Projected Change



Population Trends	2000	2010	2021	2026	2031
Study Area Population	153,473	154,325	152,539	155,694	158,580
Population Change		852	-1,786	3,155	2,886
Percent Change		0.56%	-1.16%	2.07%	1.85%
State Population	12,281,058	12,702,379	12,942,565	13,156,751	13,389,676
Population Change		421,321	240,186	214,186	232,925
Percent Change		3.43%	1.89%	1.65%	1.77%

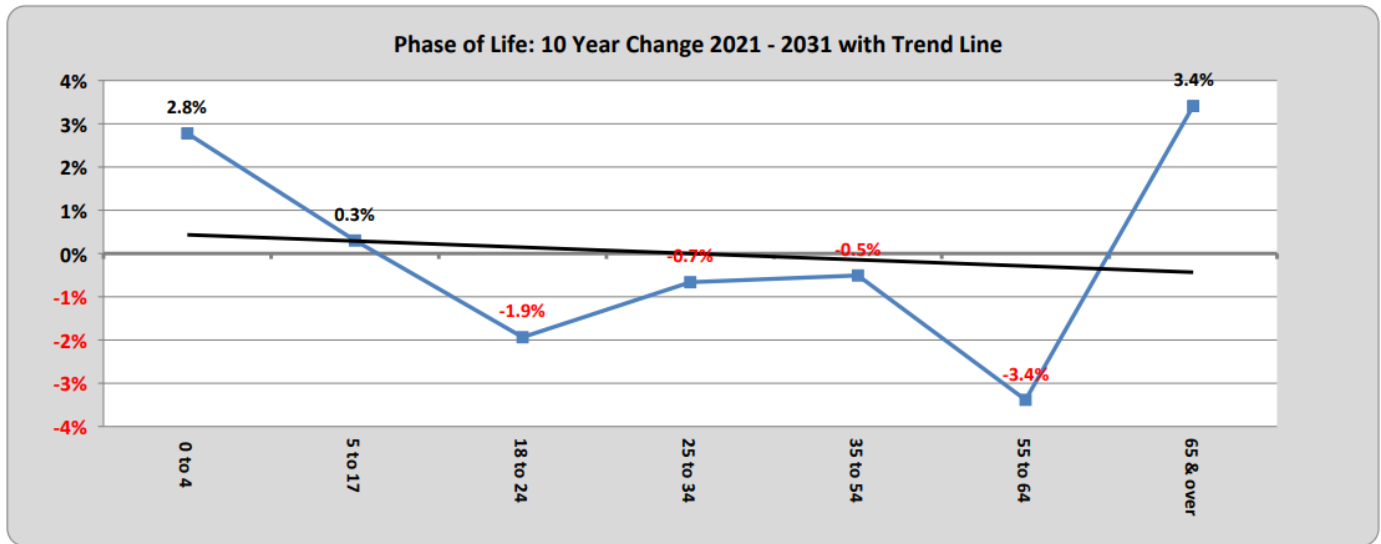
*Projected Percentage Population Change: Comparison of Study Area to State*

Source: US Census Bureau, Synergos Technologies Inc., Experian, DecisionInsite/MissionInsite

### Observations:

1. The population is projected and forecasted to grow in the next decade by a total of 6,041 residents. With 35.9% of the residents self-identifying as Catholics, there should be an additional 2,169 Catholics in the area.
2. During the previous decade of 2010 to 2021, the area lost 1,786 residents.

**Figure 2**  
**Phase of Life Changes 2021 to 2031**



	2010		2021		2026		2031		10 Yr Change
<b>Phase of life Forecast</b>									
Before Formal Schooling: Ages 0 to 4	8,508	5.51%	3,850	2.59%	4,024	2.66%	8,604	5.37%	2.78%
Required Formal Schooling: Ages 5 to 17	25,426	16.48%	20,901	14.08%	20,741	13.69%	23,035	14.38%	0.30%
College/Career Starts: Ages 18 to 24	15,959	10.34%	16,934	11.40%	15,958	10.54%	15,170	9.47%	-1.94%
Singles and Young Families: Ages 25 to 34	18,149	11.76%	19,608	13.20%	20,648	13.63%	20,094	12.54%	-0.66%
Families/Empty Nesters: Ages 35 to 54	42,658	27.64%	35,303	23.77%	35,117	23.19%	37,279	23.27%	-0.51%
Enrich Years Singles/Couples: Ages 55 to 64	20,050	12.99%	21,515	14.49%	19,854	13.11%	17,793	11.11%	-3.38%
Retirement Opportunities: Age 65 and over	23,575	15.28%	30,380	20.46%	35,114	23.18%	38,244	23.87%	3.41%
<b>Totals:</b>	<b>154,325</b>	<b>100.00%</b>	<b>148,491</b>	<b>100.00%</b>	<b>151,456</b>	<b>100.00%</b>	<b>160,219</b>	<b>100.00%</b>	

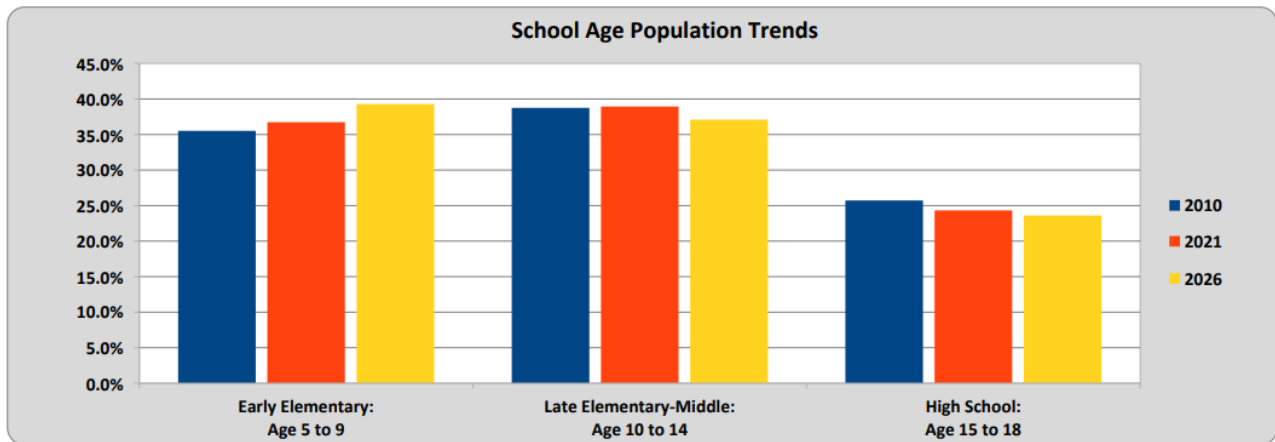
Phase of Life presents how a community changes and people age through their various life phases.

Source: US Census Bureau, Synergos Technologies Inc., Experian, DecisionInsite/MissionInsite

**Observations:**

1. Between 2026 and 2031, the age group of 0 to 4 is forecasted to more than double, from 4,024 in 2026 to 8,604 in 2031. The impact of the increased birth rate will begin to appear in early elementary enrollments in the same period.
2. The number of residents aged 65 and over will continue to increase and eventually surpass the largest age group of residents aged 35 to 54 years old.
3. During the previous decade, over 7,000 residents in the 35 to 54 age group and their children left the area. The net effect of this loss of population was offset by increases in other age groups, especially the 65 and over group.
4. The 55 to 64 age group is projected and forecasted to lose the largest number of residents and overall percentage of the population. This is an age group which often experiences the downsizing of residences or retirement to warmer climates.

**Figure 3**  
**School-aged Children Trends: by levels**



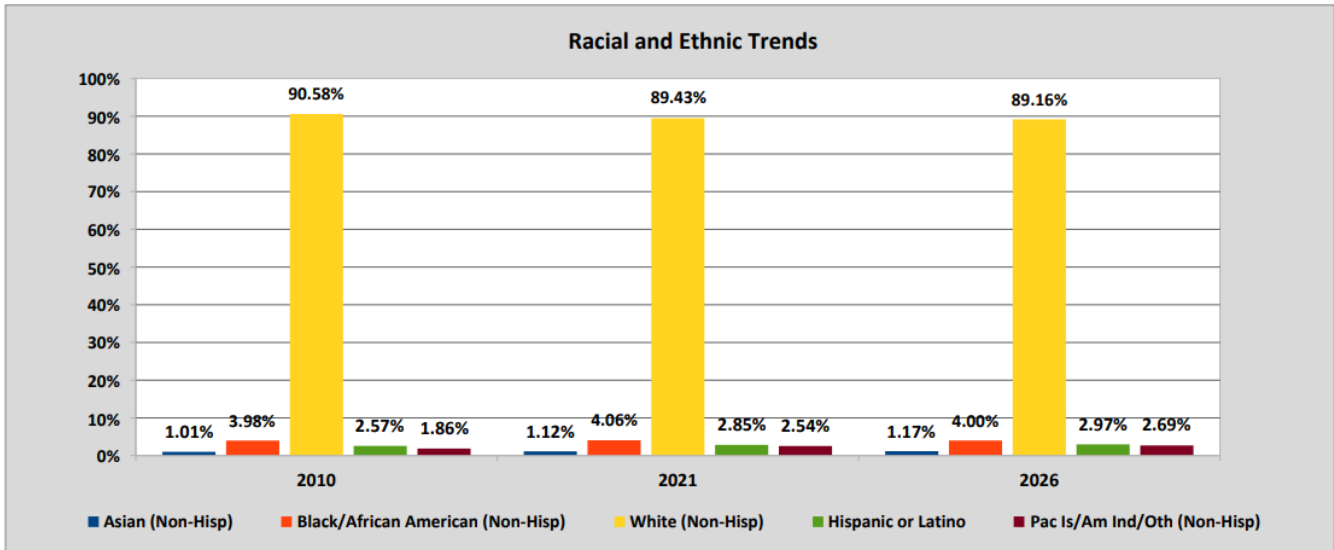
	Study Area						PA			Comp Index CY	
	2010		2021		2026		5 Yr Chg	2010	2021		2026
School Age Population Trends											
Early Elem: 5 to 9	9,032	35.52%	7,678	36.74%	8,149	39.29%	2.55%	36.54%	37.28%	38.39%	99
Late Elem-Mid: 10 to 14	9,854	38.76%	8,139	38.94%	7,696	37.10%	-1.84%	38.36%	38.24%	37.80%	102
High School: 15 to 17	6,540	25.72%	5,084	24.32%	4,897	23.61%	-0.72%	25.11%	24.49%	23.81%	99
<b>Totals:</b>	<b>25,426</b>	<b>100.00%</b>	<b>20,901</b>	<b>100.00%</b>	<b>20,742</b>	<b>100.00%</b>		<b>100.00%</b>	<b>100.00%</b>	<b>100.00%</b>	

Source: US Census Bureau, Synergos Technologies Inc., Experian, DecisionInsite/MissionInsite

**Observations:**

1. The early elementary school population is projected to increase by 471 students over the next five years. Even with that increase, early childhood enrollment will be 900 students fewer than in 2010.
2. Late elementary, middle, and high school enrollments are projected to decrease.

**Figure 4**  
**Racial and Ethnic Population Trends**



Study Area	Study Area					PA 2021	Comp Index CY		
	2010	2021	2026	5 Yr Chg	PA 2021				
<b>Racial/Ethnic Trends</b>									
Asian (Non-Hisp)	1,551	1.01%	1,715	1.12%	1,829	1.17%	0.05%	3.10%	36
Black/African American (Non-Hisp)	6,146	3.98%	6,199	4.06%	6,233	4.00%	-0.06%	10.52%	39
White (Non-Hisp)	139,785	90.58%	136,412	89.43%	138,819	89.16%	-0.27%	77.96%	115
Hispanic or Latino	3,968	2.57%	4,340	2.85%	4,629	2.97%	0.13%	6.48%	44
Pac Is/Am Ind/Oth (Non-Hisp)	2,874	1.86%	3,873	2.54%	4,184	2.69%	0.15%	1.94%	131
<b>Totals:</b>	<b>154,324</b>	<b>100.00%</b>	<b>152,539</b>	<b>100.00%</b>	<b>155,694</b>	<b>100.00%</b>		<b>100.00%</b>	

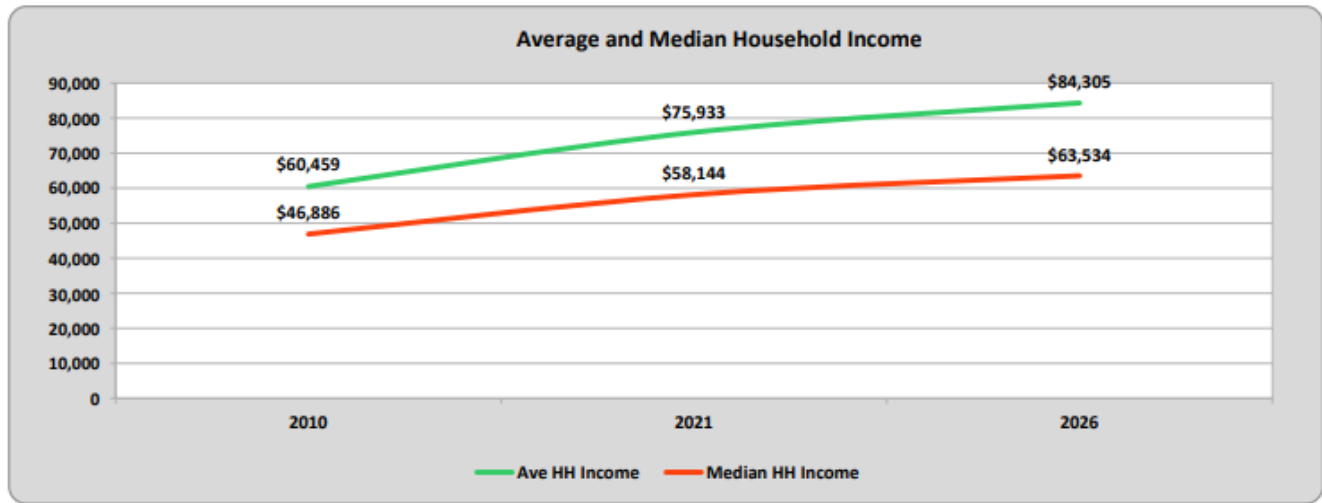
NOTE: Race and ethnicity breakouts are based upon Census Bureau categories. Only those groups for which the Bureau provides extended detail can be reported.

Source: US Census Bureau, Synergos Technologies Inc., Experian, DecisionInsite/MissionInsite

**Observations:**

1. The Erie West area is predominantly White with 90% of the population.
2. The Hispanic or Latino population is projected to grow from 4,340 residents in 2021 to 4,629 by 2026. About half of the Hispanic or Latino population is Catholic.

**Figure 5**  
**Average and Median Household Income Trends**



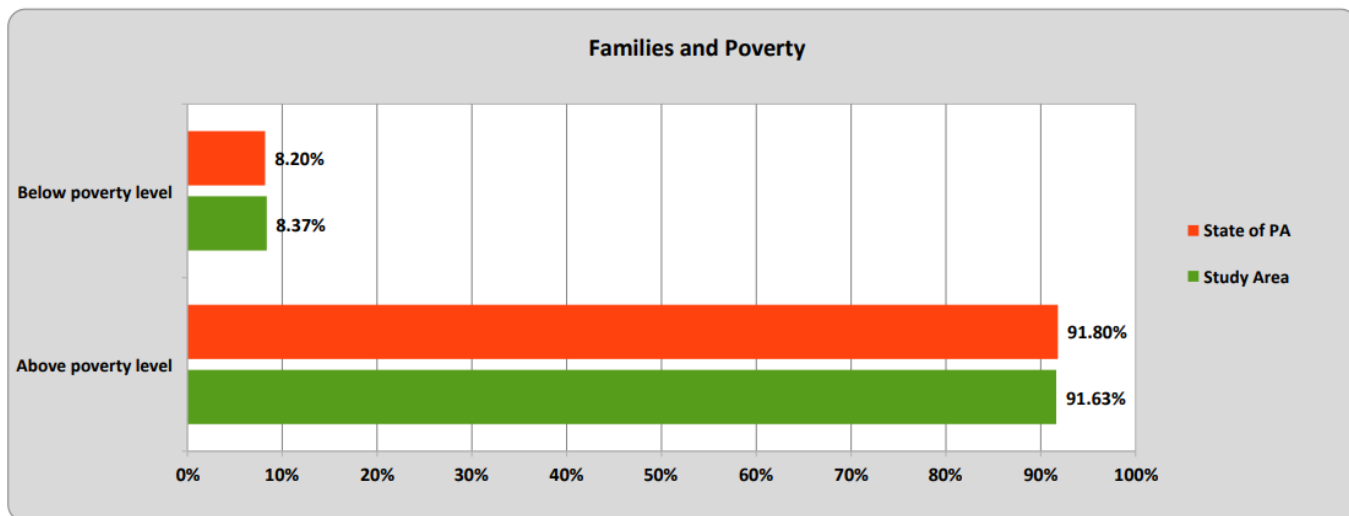
Household Income Trends	2010	2021	2026
Study Area: Average HH Income	60,459	75,933	84,305
Households Change		15,474	8,372
Percent Change		25.59%	11.03%
Study Area: Median HH Income	46,886	58,144	63,534
Per Capita Income	24,429	30,619	34,017
Per Capita Income Change		6,190	3,397
Percent Change		25.34%	11.10%
State Average HH Income	67,563	87,947	99,111
Households Change		20,384	11,164
Percent Change		30.17%	12.69%
Average HH Income Comparative Index	85	86	85

Source: US Census Bureau, Synergos Technologies Inc., Experian, DecisionInsite/MissionInsite

**Observations:**

1. The Erie West area average and median household incomes have increased and are projected to increase over the next five years but at lower rates and percentages of increase than in the State.
2. The average median household income in the United States is \$79,900 which is over \$16,000 more than the average median household income in the Erie West area.

**Figure 6**  
**2021 Percentages of Families Above and Below Poverty Level**

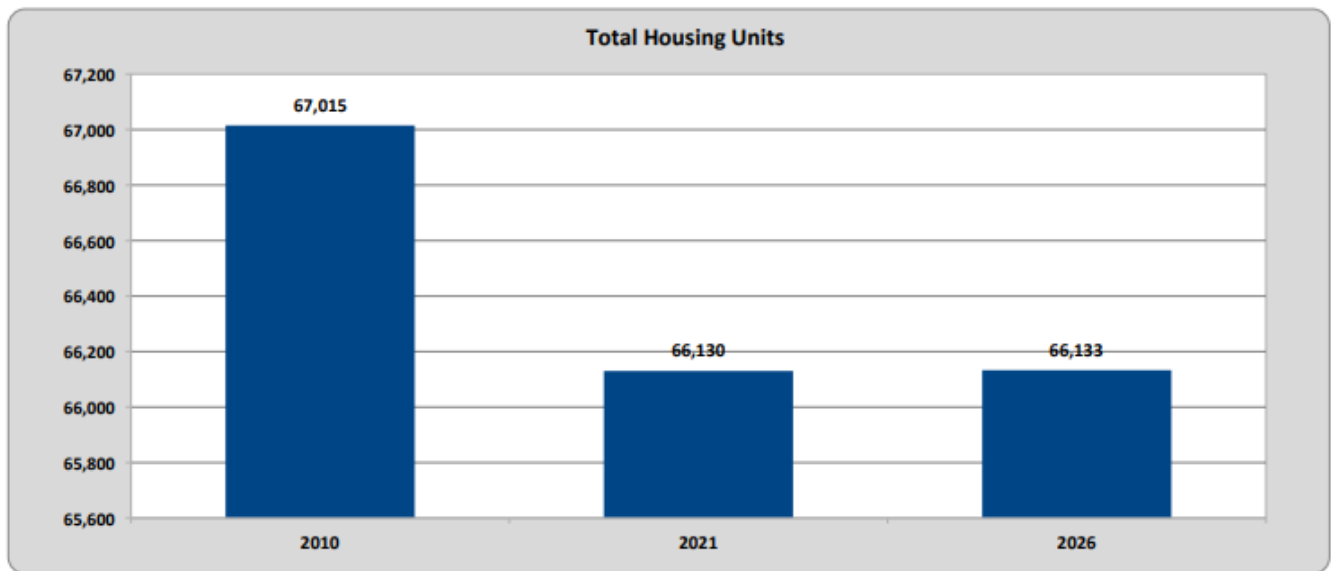


Source: US Census Bureau, Synergos Technologies Inc., Experian, DecisionInsite/MissionInsite

**Observations:**

1. The rate of poverty in the deanery area is slightly higher than in the State of Pennsylvania.
2. The percentage of Americans who live below the poverty level is 13.2%.

**Figure 7  
Housing**



	2010	2021	2026
Housing Units	67,015	66,130	66,133
Family Households Change		-885	3
Percent Change		-1.32%	0.00%

	2010		Study Area 2021		2026		5 Yr Chg	PA 2021	Comp Index CY
<b>Housing by Occupancy</b>									
Occupied	62,356	93.05%	61,510	93.01%	61,627	93.19%	0.17%	90.69%	103
Vacant	4,659	6.95%	4,620	6.99%	4,505	6.81%	-0.17%	9.31%	75
<b>Totals:</b>	<b>67,015</b>	<b>100.00%</b>	<b>66,130</b>	<b>100.00%</b>	<b>66,132</b>	<b>100.00%</b>		<b>100.00%</b>	
<b>Housing by Type of Occupancy</b>									
Owner Occupied	43,011	68.98%	42,663	69.36%	43,196	70.09%	0.73%	69.61%	100
Renter Occupied	19,345	31.02%	18,847	30.64%	18,432	29.91%	-0.73%	30.39%	101
<b>Totals:</b>	<b>62,356</b>	<b>100.00%</b>	<b>61,510</b>	<b>100.00%</b>	<b>61,628</b>	<b>100.00%</b>		<b>100.00%</b>	

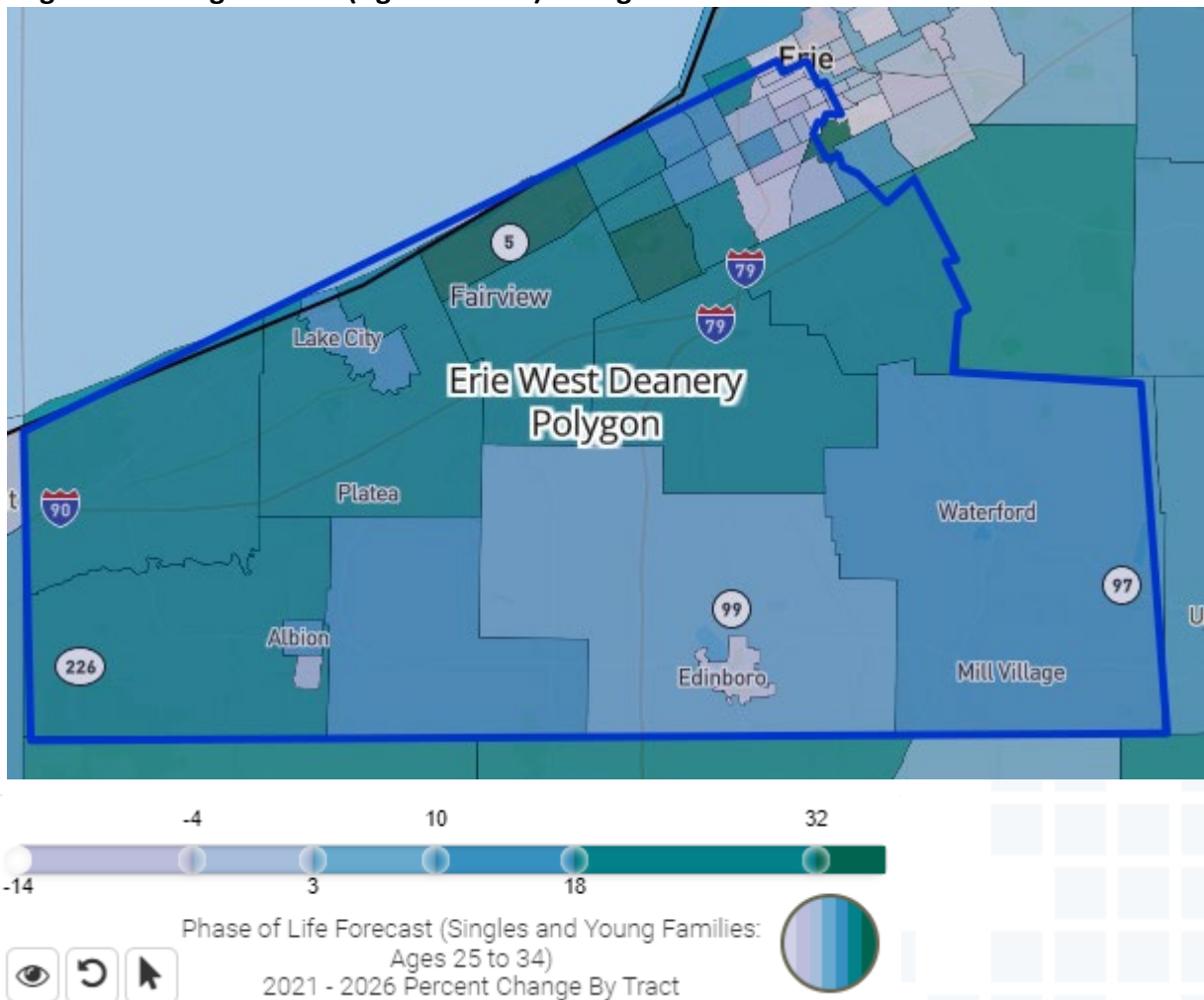
Source: US Census Bureau, Synergos Technologies Inc., Experian, DecisionInsite/MissionInsite

**Observations:**

1. This is a five-year projection for housing which shows a slight change in the number of housing units within the area.
2. Both the occupancy and vacancy rates have been consistent over the last decade and as projected for the future.
3. 70% of the housing units are owner-occupied while 30% are renter occupied.

## MAPS OF PARTICULAR POPULATION GROUPS

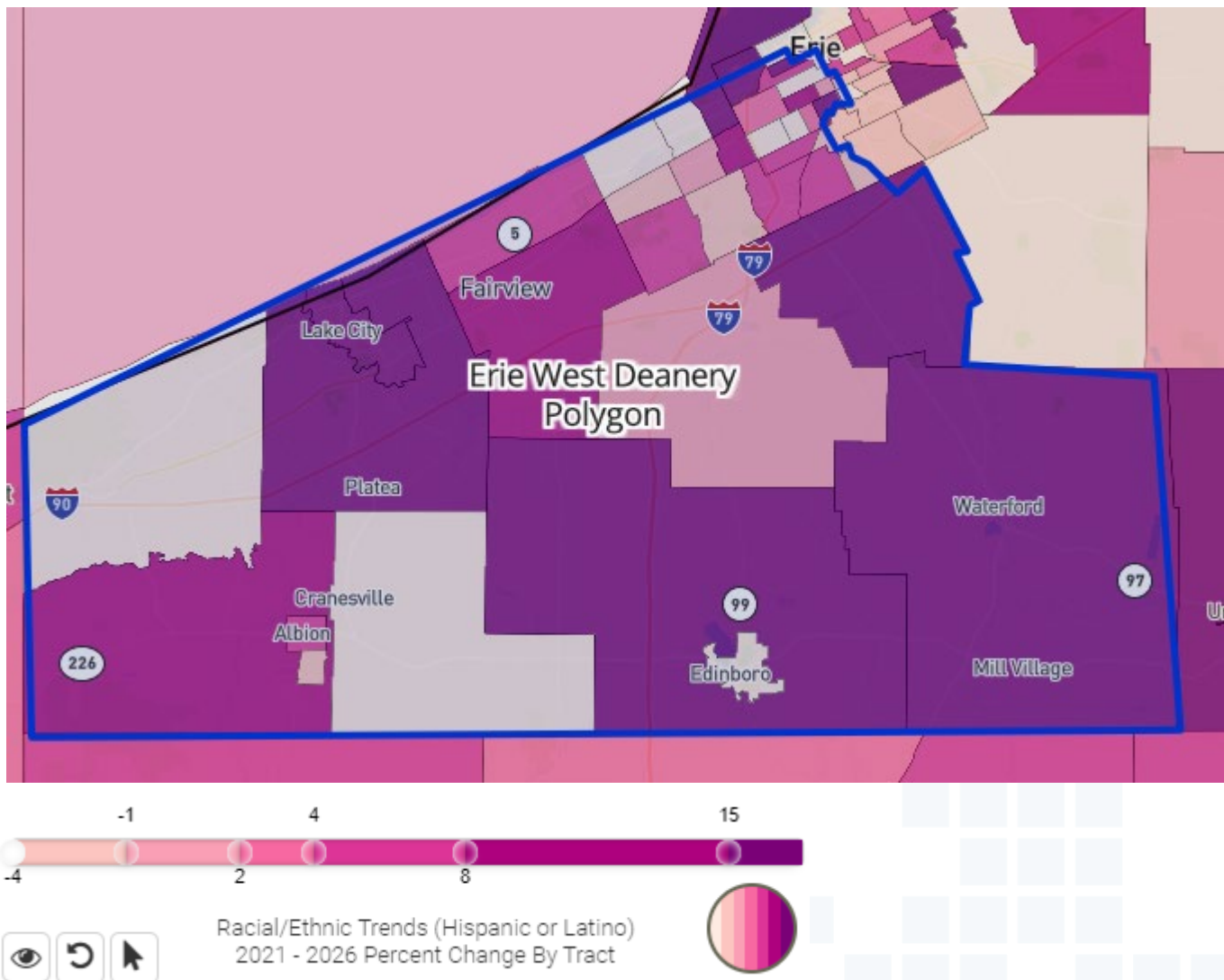
**Figure 8**  
**Single and Young Families (Ages 25 to 34) Changes 2021 to 2026**



### **Observations:**

1. There are two areas in the deanery with projected higher concentrations of young adults. One is in the Fairview area near the Lake and the other is along the I-79 corridor.
2. There are fewer young adults in the downtown area and to the south and southeast of the deanery.

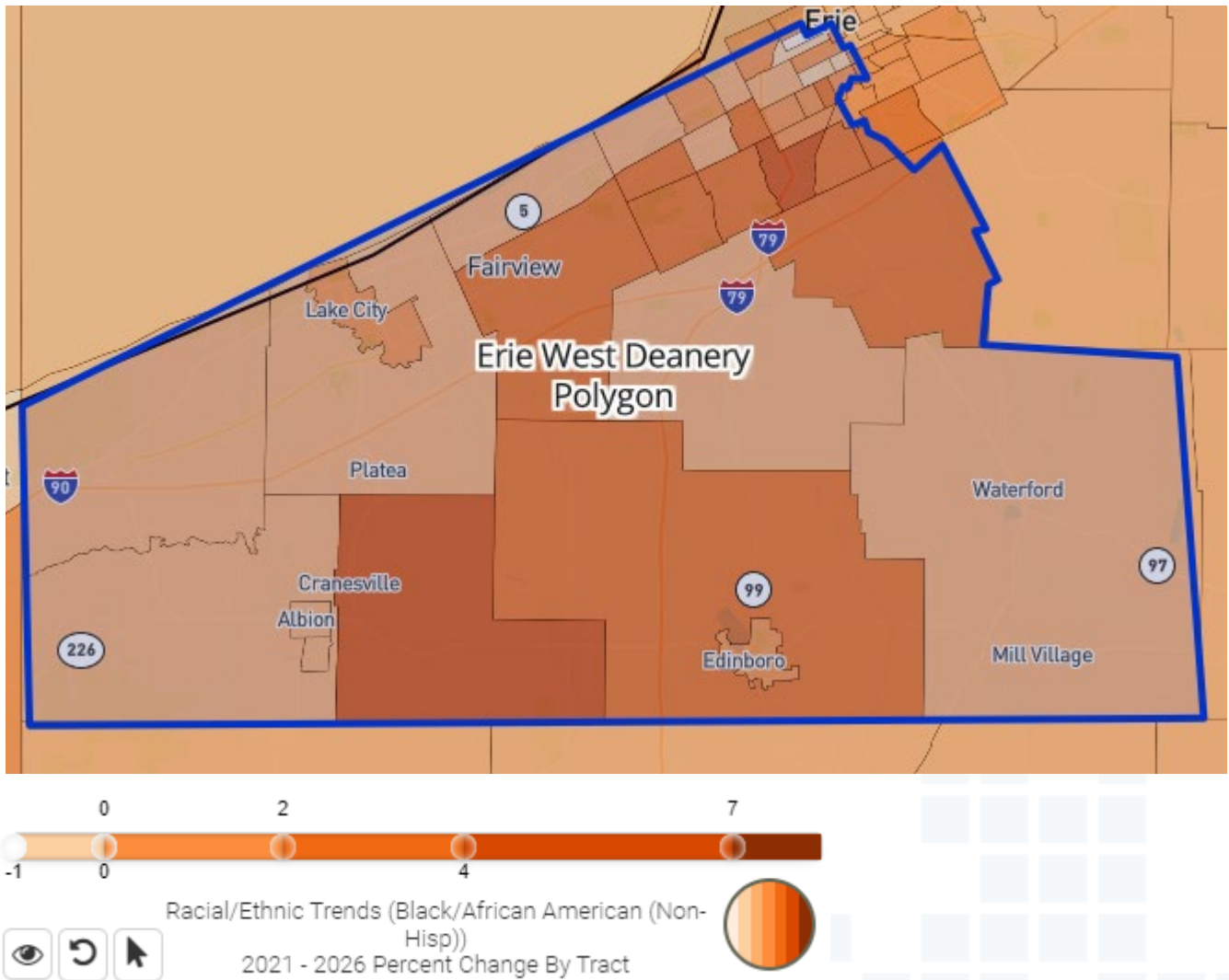
**Figure 9**  
**Hispanic or Latino Change 2021 to 2026**



**Observations:**

1. The Hispanic or Latino population in the deanery will grow along the lakefront in the City of Erie, in the Lake City vicinity, and to the south and southeast of the City of Erie.
2. The population is so dispersed throughout the deanery that the establishment of a ministry would be difficult.

**Figure 10**  
**Black/African American Change 2021 to 2026**

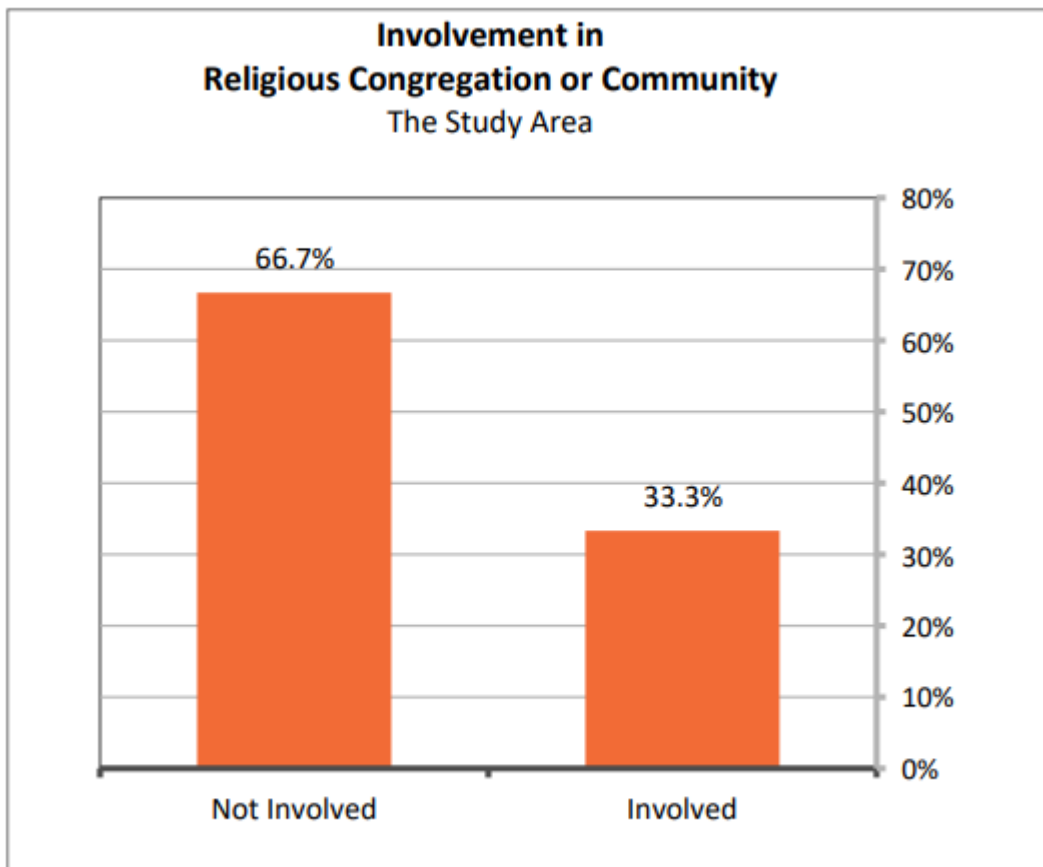


**Observations:**

1. The Black/African American population in the deanery is projected to grow in the middle of the map from the City of Erie all the way to Edinboro.
2. The USCCB (United States Conference of Catholic Bishops) estimates that about 7% of Black/African Americans are Catholic.

## II. DEANERY RELIGIOUS DATA

**Figure 11**  
**Involvement in Religious Congregation or Community**



Source: US Census Bureau, Synergos Technologies Inc., Experian, DecisionInsite/MissionInsite

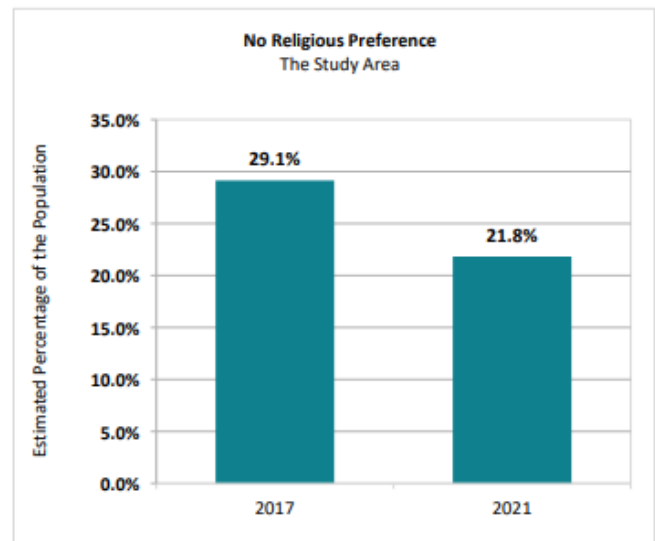
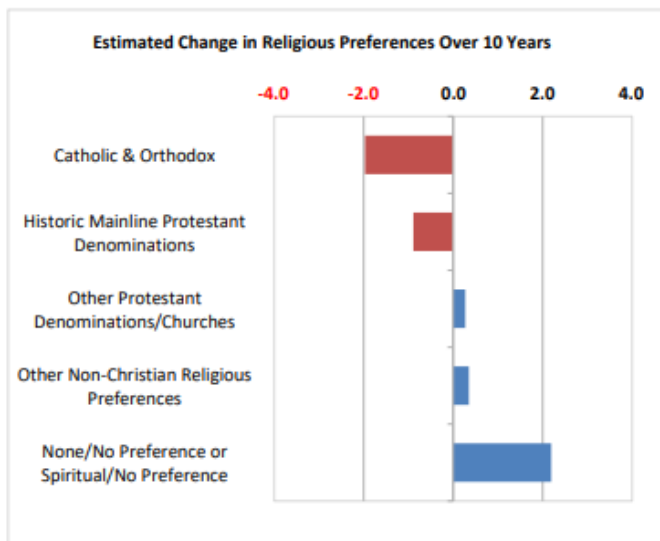
**Observations:**

1. Two-thirds of area residents are not involved in any religious congregation or community.
2. There is much potential for evangelization efforts in the Erie West area.

**Figure 12**  
**Religious Preferences**

Summary Religious Preferences: Christian and Other									
Study Area Compared to National Average	Study Area			US Average			Comparative Index		
	10 Years Prior	Now	Point Change	10 Years Prior	Now	Point Change	10 Years Prior	Now	
	Catholic & Orthodox	37.9%	35.9%	-2.0	24.0%	25.9%	1.9	158	139
<b>Historic Mainline Protestant Denominations</b>	<b>23.3%</b>	<b>22.4%</b>	<b>-0.9</b>	<b>30.4%</b>	<b>31.9%</b>	<b>1.6</b>	<b>77</b>	<b>70</b>	
Other Protestant Denominations/Churches	6.4%	6.7%	0.3	11.8%	11.3%	-0.5	54	59	
<b>Total: Christian Religious Preferences</b>	<b>67.6%</b>	<b>65.0%</b>	<b>-2.6</b>	<b>66.1%</b>	<b>69.1%</b>	<b>3.0</b>	<b>102</b>	<b>94</b>	
Other Non-Christian Religious Preferences	12.1%	12.4%	0.4	9.5%	9.6%	0.1	127	130	
<b>None/No Preference or Spiritual/No Preference</b>	<b>20.4%</b>	<b>22.6%</b>	<b>2.2</b>	<b>24.4%</b>	<b>21.3%</b>	<b>-3.1</b>	<b>84</b>	<b>106</b>	

Hint: This report summarizes the religious preference report by gathering many different religious traditions into general categories. This focuses on where growth and/or decline is happening.



Hint: The graph on the left visualizes the growth or decline of the major categories of the study area's different religious traditions. The graph on the right shows the significance of the population that indicated their preference was "none" or "no preference."

Note: **Historic Mainline Protestant** includes Baptist, Congregational, Episcopal, Lutheran, Methodist, and Presbyterian/Reformed.

Source: US Census Bureau, Synergos Technologies Inc., Experian, DecisionInsite/MissionInsite

**Observations:**

- 35.9% of all residents self-identify as Catholic which is down by 2% over the previous ten years. This means that there are 54,760 Catholics in the Erie West area. The parishes have registered 9,559 households (average household size in Pennsylvania is 2.49) which translates to 23,800 parishioners. That leaves 30,960 Catholic residents who are not engaged in a parish.

2. Of the two-thirds who are not involved in a religious community or congregation, 22.6% are "nones" which means they have no religious preference. This percentage has increased by 2.2% over the last five years.



### III. PARISH DATA

#### ERIE WEST DEANERY PARISH STATISTICS

**Figure 13**  
**Registered Catholic households**

Parish	City	14-15	15-16	16-17	17-18	18-19	19-20	20-21	Change 14-15 to 20-21	
									Number	Percent
All Saints	Waterford	403	409	397	392	390	361	348	-55	-14%
Blessed Sacrament	Erie	1,046	1,009	1,009	920	805	719	716	-330	-32%
Holy Cross	Fairview	507	517	527	519	511	501	485	-22	-4%
Our Lady of Peace	Erie	2,390	2,410	2,439	2,439	2,367	1,816	1,835	-555	-23%
Our Lady of the Lake	Edinboro	627	627	571	572	552	543	538	-89	-14%
Sacred Heart of Jesus <sup>1</sup>	Erie	697	665	627	628	610	547	493	-204	-29%
St. Andrew <sup>1</sup>	Erie	471	433	387	376	348	238	323	-148	-31%
St. Francis Xavier	McKean	562	555	555	453	459	473	473	-89	-16%
St. George	Erie	2,769	2,810	1,441	1,327	1,364	1,380	1,393	-1,376	-50%
St. John the Evangelist	Girard	583	335	354	354	354	300	300	-283	-49%
St. Joseph/Bread of Life Community	Erie	501	458	458	428	406	388	404	-97	-19%
St. Jude the Apostle	Erie	1,434	1,461	1,490	1,870	1,151	1,227	1,214	-220	-15%
St. Julia	Erie	377	365	365	362	352	360	298	-79	-21%
St. Lawrence the Martyr	Albion	215	206	285	251	201	182	176	-39	-18%
St. Paul <sup>1</sup>	Erie	240	236	212	201	200	252	193	-47	-20%
St. Peter Cathedral	Erie	634	643	613	638	653	662	643	9	1%
St. Stephen of Hungary/Inglesia De San Esteban	Erie	300	346	296	270	230	230	200	-100	-33%
<b>Total</b>		<b>13,756</b>	<b>13,485</b>	<b>12,026</b>	<b>12,000</b>	<b>10,953</b>	<b>10,179</b>	<b>10,032</b>	<b>-3,724</b>	<b>-27%</b>

Number in italics indicates estimate based on trend as data was not provided

<sup>1</sup> Partner Parishes

Source: Diocese of Erie

#### Observations:

1. Membership at deanery parishes has declined by 3,724 households (about 9,275 people) or -27% in the past seven years. That decline is more than five times greater than the area population decline of 1,786 residents from 2010 to 2021.
2. The smaller parishes in the deanery are not as able to sustain such significant membership and financial losses as larger parishes.

**Figure 14**  
**Infant Baptisms (ages 0-1)**

Parish	City	14-15	15-16	16-17	17-18	18-19	19-20	20-21	Change 14-15 to 20-21	
									Number	Percent
All Saints	Waterford	2	0	1	2	1	0	2	0	0%
Blessed Sacrament	Erie	28	18	22	14	25	8	14	-14	-50%
Holy Cross	Fairview	4	6	2	5	4	3	5	1	25%
Our Lady of Peace	Erie	50	63	48	44	36	22	27	-23	-46%
Our Lady of the Lake	Edinboro	12	20	13	16	12	9	10	-2	-17%
Sacred Heart of Jesus <sup>1</sup>	Erie	4	9	8	6	7	4	4	0	0%
St. Andrew <sup>1</sup>	Erie	6	5	5	5	2	3	1	-5	-83%
St. Francis Xavier	McKean	2	7	3	5	4	18	9	7	350%
St. George	Erie	43	40	27	26	26	18	15	-28	-65%
St. John the Evangelist	Girard	10	1	7	7	7	1	1	-9	-90%
St. Joseph/Bread of Life Community	Erie	29	27	24	10	7	7	9	-20	-69%
St. Jude the Apostle	Erie	36	26	37	30	11	16	11	-25	-69%
St. Julia	Erie	2	4	0	1	1	1	1	-1	-50%
St. Lawrence the Martyr	Albion	7	4	2	3	5	1	0	-7	-100%
St. Paul <sup>1</sup>	Erie	5	1	0	0	1	0	0	-5	-100%
St. Peter Cathedral	Erie	4	1	6	2	2	3	0	-4	-100%
St. Stephen of Hungary/Inglesia De San Esteban	Erie	12	7	8	8	11	11	11	-1	-8%
<b>Total</b>		<b>256</b>	<b>239</b>	<b>213</b>	<b>184</b>	<b>162</b>	<b>125</b>	<b>120</b>	<b>-136</b>	<b>-53%</b>

Number in italics indicates estimate based on trend as data was not provided

<sup>1</sup> Partner Parishes

Source: Diocese of Erie

**Observations:**

1. The average number of infant baptisms in the deanery is 186. The last three years have been below average but are consistent with a steady decline.
2. The baptism to funeral ratio of parishes indicates generic growth. A ratio of at least 2 baptisms for 1 funeral is preferable. The average number of funerals in the deanery is 400. The average ratio of baptisms to funerals is slightly more than 2 funerals for 1 baptism. In 2020-21, the ratio was 3 funerals for 1 baptism.

**Figure 15**  
**Youth First Communions**

Parish	City	14-15	15-16	16-17	17-18	18-19	19-20	20-21	Change 14-15 to 20-21	
									Number	Percent
All Saints	Waterford	11	14	3	3	2	3	13	2	18%
Blessed Sacrament	Erie	49	51	22	14	25	8	25	-24	-49%
Holy Cross	Fairview	9	20	2	5	4	3	10	1	11%
Our Lady of Peace	Erie	84	84	48	44	36	22	66	-18	-21%
Our Lady of the Lake	Edinboro	14	15	13	16	12	9	14	0	0%
Sacred Heart of Jesus <sup>1</sup>	Erie	15	7	8	6	7	4	9	-6	-40%
St. Andrew <sup>1</sup>	Erie	5	13	5	5	2	3	4	-1	-20%
St. Francis Xavier	McKean	14	12	3	5	4	18	14	0	0%
St. George	Erie	59	66	27	26	26	18	45	-14	-24%
St. John the Evangelist	Girard	8	7	7	7	7	1	9	1	13%
St. Joseph/Bread of Life Community	Erie	15	13	24	10	7	7	16	1	7%
St. Jude the Apostle	Erie	58	48	37	30	11	16	48	-10	-17%
St. Julia	Erie	16	11	0	1	1	1	1	-15	-94%
St. Lawrence the Martyr	Albion	4	6	2	3	5	1	0	-4	-100%
St. Paul <sup>1</sup>	Erie	0	0	8	3	5	2	0	0	
St. Peter Cathedral	Erie	15	12	11	20	11	15	4	-11	-73%
St. Stephen of Hungary/Inglesia De San Esteban	Erie	12	14	8	8	11	11	11	-1	-8%
<b>Total</b>		<b>388</b>	<b>393</b>	<b>228</b>	<b>206</b>	<b>176</b>	<b>142</b>	<b>289</b>	<b>-99</b>	<b>-26%</b>

Number in italics indicates estimate based on trend as data was not provided

<sup>1</sup> Partner Parishes

Source: Diocese of Erie

**Observations:**

1. The average number of youth First Communions over the seven-year period is 260 per year.
2. The number of youth First Communions last year was higher than average and the largest number since 2015-16.

**Figure 16**  
**Youth Confirmations (ages 0-17)**

Parish	City	14-15	15-16	16-17	17-18	18-19	19-20	20-21	Change 14-15 to 20-21	
									Number	Percent
All Saints	Waterford	18	12	13	14	8	6	15	-3	-17%
Blessed Sacrament	Erie	31	18	42	47	36	27	21	-10	-32%
Holy Cross	Fairview	12	12	18	11	18	12	12	0	0%
Our Lady of Peace	Erie	94	76	105	80	47	52	54	-40	-43%
Our Lady of the Lake	Edinboro	11	10	12	11	10	9	11	0	0%
Sacred Heart of Jesus <sup>1</sup>	Erie	11	10	4	11	3	1	6	-5	-45%
St. Andrew <sup>1</sup>	Erie	6	10	12	5	3	3	3	-3	-50%
St. Francis Xavier	McKean	15	22	16	7	6	18	12	-3	-20%
St. George	Erie	50	45	64	55	39	37	42	-8	-16%
St. John the Evangelist	Girard	15	13	11	11	11	3	5	-10	-67%
St. Joseph/Bread of Life Community	Erie	0	0	0	0	0	0	0	0	
St. Jude the Apostle	Erie	61	53	39	88	38	50	63	2	3%
St. Julia	Erie	0	6	8	19	3	1	4	4	
St. Lawrence the Martyr	Albion	4	6	6	5	8	4	1	-3	-75%
St. Paul <sup>1</sup>	Erie	0	0	0	0	0	0	0	0	
St. Peter Cathedral	Erie	23	45	60	55	41	35	3	-20	-87%
St. Stephen of Hungary/Ingllesia De San Esteban	Erie	21	0	25	0	0	0	0	-21	-100%
<b>Total</b>		<b>372</b>	<b>338</b>	<b>435</b>	<b>419</b>	<b>271</b>	<b>258</b>	<b>252</b>	<b>-120</b>	<b>-32%</b>

Number in italics indicates estimate based on trend as data was not provided

<sup>1</sup> Partner Parishes

Source: Diocese of Erie

**Observations:**

1. The average number of youth confirmations in the deanery is 335 per year.
2. Last year, there were 252 youth confirmations, which is the lowest number over the last seven years.

**Figure 17**  
**Adult Confirmations**

Parish	City	14-15	15-16	16-17	17-18	18-19	19-20	20-21	Change 14-15 to 20-21	
									Number	Percent
All Saints	Waterford	3	2	2	3	0	1	1	-2	-67%
Blessed Sacrament	Erie	9	0	9	4	2	4	6	-3	-33%
Holy Cross	Fairview	0	2	0	0	0	1	0	0	
Our Lady of Peace	Erie	9	10	8	8	4	3	3	-6	-67%
Our Lady of the Lake	Edinboro	5	3	7	5	0	2	3	-2	-40%
Sacred Heart of Jesus <sup>1</sup>	Erie	1	2	2	2	1	0	0	-1	-100%
St. Andrew <sup>1</sup>	Erie	0	4	4	0	0	0	0	0	
St. Francis Xavier	McKean	0	1	0	0	0	1	0	0	
St. George	Erie	12	4	12	8	6	5	5	-7	-58%
St. John the Evangelist	Girard	2	2	0	0	0	0	0	-2	-100%
St. Joseph/Bread of Life Community	Erie	4	5	0	0	0	0	4	0	0%
St. Jude the Apostle	Erie	15	7	18	13	10	3	0	-15	-100%
St. Julia	Erie	0	0	0	0	0	0	0	0	
St. Lawrence the Martyr	Albion	0	0	1	1	0	0	0	0	
St. Paul <sup>1</sup>	Erie	0	0	0	0	0	0	0	0	
St. Peter Cathedral	Erie	3	4	3	1	5	3	0	-3	-100%
St. Stephen of Hungary/Inglesia De San Esteban	Erie	0	0	1	0	0	0	0	0	
<b>Total</b>		<b>63</b>	<b>46</b>	<b>67</b>	<b>45</b>	<b>28</b>	<b>23</b>	<b>22</b>	<b>-41</b>	<b>-65%</b>

Number in italics indicates estimate based on trend as data was not provided

<sup>1</sup> Partner Parishes

Source: Diocese of Erie

**Observations:**

1. The average number of adult confirmations in the deanery is 42 per year. The number of adult confirmations is one of the indicators of evangelization activity in a parish.
2. Last year's number of adult confirmations was below the average and is the lowest number in the seven-year period.

**Figure 18**  
**Catechumens**

Parish	Location	14-15	15-16	16-17	17-18	18-19	19-20	20-21	Change 14-15 to 20-21	
									Number	Percent
All Saints	Waterford	0	2	1	3	0	1	0	0	
Blessed Sacrament	Erie	16	0	0	0	0	0	2	-14	-88%
Holy Cross	Fairview	0	1	0	0	0	0	0	0	
Our Lady of Peace	Erie	2	1	0	3	1	3	1	-1	-50%
Our Lady of the Lake	Edinboro	0	0	3	1	1	1	2	2	
Sacred Heart of Jesus <sup>1</sup>	Erie	0	1	0	0	0	0	0	0	
St. Andrew <sup>1</sup>	Erie	0	0	0	0	0	0	0	0	
St. Francis Xavier	McKean	1	0	0	0	0	1	0	-1	-100%
St. George	Erie	7	11	10	5	2	4	0	-7	-100%
St. John the Evangelist	Girard	3	0	0	0	0	0	0	-3	-100%
St. Joseph/Bread of Life Community	Erie	3	0	1	0	0	0	1	-2	-67%
St. Jude the Apostle	Erie	7	3	13	9	10	12	4	-3	-43%
St. Julia	Erie	0	0	0	0	0	0	0	0	
St. Lawrence the Martyr	Albion	0	0	0	0	0	0	0	0	
St. Paul <sup>1</sup>	Erie	0	0	0	0	0	0	0	0	
St. Peter Cathedral	Erie	0	0	0	0	0	0	0	0	
St. Stephen of Hungary/Inglesia De San Esteban	Erie	0	0	0	0	0	0	0	0	
<b>Total</b>		<b>39</b>	<b>19</b>	<b>28</b>	<b>21</b>	<b>14</b>	<b>22</b>	<b>10</b>	<b>-29</b>	<b>-74%</b>

Number in italics indicates estimate based on trend as data was not provided

<sup>1</sup> Partner Parishes

Source: *Diocese of Erie*

**Observations:**

1. The average number of catechumens in the deanery is 22 per year. The number of catechumens is one of the main indicators of evangelization activity in a parish.
2. A significant percentage of the parishes have had no catechumens or few.

**Figure 19**  
**Number of Candidates**

Parish	City								Change 14-15 to 20-21	
		14-15	15-16	16-17	17-18	18-19	19-20	20-21	Number	Percent
All Saints	Waterford	11	9	12	3	10	12	11	0	0%
Blessed Sacrament	Erie	4	0	0	4	4	4	4	0	0%
Holy Cross	Fairview	0	1	0	0	1	1	0	0	
Our Lady of Peace	Erie	5	3	8	5	3	1	2	-3	-60%
Our Lady of the Lake	Edinboro	7	3	5	4	1	1	1	-6	-86%
Sacred Heart of Jesus <sup>1</sup>	Erie	1	1	2	2	1	0	0	-1	-100%
St. Andrew <sup>1</sup>	Erie	0	0	1	0	0	0	0	0	
St. Francis Xavier	McKean	0	1	0	0	0	0	0	0	
St. George	Erie	14	5	2	7	6	3	3	-11	-79%
St. John the Evangelist	Girard	0	2	0	0	0	0	0	0	
St. Joseph/Bread of Life Community	Erie	1	5	5	0	0	0	3	2	200%
St. Jude the Apostle	Erie	8	9	14	9	9	11	2	-6	-75%
St. Julia	Erie	0	0	0	0	0	0	0	0	
St. Lawrence the Martyr	Albion	2	0	0	0	0	0	0	-2	-100%
St. Paul <sup>1</sup>	Erie	0	0	33	46	49	55	16	16	
St. Peter Cathedral	Erie	27	22	33	31	18	28	19	-8	-30%
St. Stephen of Hungary/Ingllesia De San Esteban	Erie	0	0	0	0	0	0	0	0	
<b>Total</b>		<b>80</b>	<b>61</b>	<b>115</b>	<b>111</b>	<b>102</b>	<b>116</b>	<b>61</b>	<b>-19</b>	<b>-24%</b>

Number in italics indicates estimate based on trend as data was not provided

<sup>1</sup> Partner Parishes

Source: Diocese of Erie

**Observations:**

1. The number of candidates for reception is another indicator of evangelization activity. Some parishes are strong in this area while most have few candidates.
2. The average number of candidates in the deanery is 92 per year.

**Figure 20**  
**Marriages**

Parish	City	14-15	15-16	16-17	17-18	18-19	19-20	20-21	Change 14-15 to 20-21	
									Number	Percent
All Saints	Waterford	0	0	0	4	4	2	0	0	
Blessed Sacrament	Erie	4	5	1	6	7	1	2	-2	-50%
Holy Cross	Fairview	4	0	1	2	1	0	1	-3	-75%
Our Lady of Peace	Erie	16	9	15	19	9	11	8	-8	-50%
Our Lady of the Lake	Edinboro	3	8	8	7	3	4	7	4	133%
Sacred Heart of Jesus <sup>1</sup>	Erie	3	1	3	5	4	1	1	-2	-67%
St. Andrew <sup>1</sup>	Erie	5	1	8	3	6	3	2	-3	-60%
St. Francis Xavier	McKean	2	1	1	5	2	4	0	-2	-100%
St. George	Erie	11	6	9	10	9	9	11	0	0%
St. John the Evangelist	Girard	2	2	1	1	1	0	1	-1	-50%
St. Joseph/Bread of Life Community	Erie	0	7	8	9	9	3	7	7	
St. Jude the Apostle	Erie	11	11	10	6	15	6	5	-6	-55%
St. Julia	Erie	2	2	1	1	0	3	1	-1	-50%
St. Lawrence the Martyr	Albion	0	0	2	8	0	0	0	0	
St. Paul <sup>1</sup>	Erie	0	0	2	1	0	4	0	0	
St. Peter Cathedral	Erie	26	7	11	6	3	2	1	-25	-96%
St. Stephen of Hungary/Inglesia De San Esteban	Erie	0	0	1	1	1	1	0	0	
<b>Total</b>		<b>89</b>	<b>60</b>	<b>82</b>	<b>94</b>	<b>74</b>	<b>54</b>	<b>47</b>	<b>-42</b>	<b>-47%</b>

Number in italics indicates estimate based on trend as data was not provided

<sup>1</sup> Partner Parishes

Source: Diocese of Erie

**Observations:**

1. The average number of marriages in the deanery is 71 per year.
2. Several parishes account for most of the weddings celebrated in the deanery.

**Figure 21**  
**Deaths**

Parish	Location	14-15	15-16	16-17	17-18	18-19	19-20	20-21	Change 14-15 to 20-21	
									Number	Percent
All Saints	Waterford	11	9	12	3	10	12	11	0	0%
Blessed Sacrament	Erie	62	31	50	35	30	4	27	-35	-56%
Holy Cross	Fairview	9	9	10	13	17	12	13	4	44%
Our Lady of Peace	Erie	58	59	65	66	62	53	59	1	2%
Our Lady of the Lake	Edinboro	10	16	14	13	16	10	11	1	10%
Sacred Heart of Jesus <sup>1</sup>	Erie	39	18	25	24	20	21	16	-23	-59%
St. Andrew <sup>1</sup>	Erie	24	27	22	20	15	23	10	-14	-58%
St. Francis Xavier	McKean	16	17	10	10	14	14	14	-2	-13%
St. George	Erie	48	45	48	48	42	55	57	9	19%
St. John the Evangelist	Girard	26	21	20	20	20	14	20	-6	-23%
St. Joseph/Bread of Life Community	Erie	17	11	16	20	18	19	22	5	29%
St. Jude the Apostle	Erie	37	43	47	40	35	35	42	5	14%
St. Julia	Erie	20	9	6	8	10	9	6	-14	-70%
St. Lawrence the Martyr	Albion	5	6	14	12	5	8	5	0	0%
St. Paul <sup>1</sup>	Erie	18	30	33	46	49	55	16	-2	-11%
St. Peter Cathedral	Erie	27	22	33	31	18	28	19	-8	-30%
St. Stephen of Hungary/Inglesia De San Esteban	Erie	6	6	7	9	12	12	12	6	100%
<b>Total</b>		<b>433</b>	<b>379</b>	<b>432</b>	<b>418</b>	<b>393</b>	<b>384</b>	<b>360</b>	<b>-73</b>	<b>-17%</b>

Number in italics indicates estimate based on trend as data was not provided

<sup>1</sup> Partner Parishes

Source: Diocese of Erie

**Observations:**

1. The deanery averages 400 funerals per year. The number of funerals has been decreasing over the seven-year period and last year's number was the lowest.
2. The parishes have lost 2,799 parishioners through death over the last seven years. The number of deaths factors into the decline in parish households and membership. There are not enough new parishioners joining the parish to offset the losses through death and outmigration from the area.

**Figure 22**  
**Average Mass Attendance**

Parish	City	14-15	15-16	16-17	17-18	18-19	19-20	20-21	Change 14-15 to 20-21	
									Number	Percent
All Saints	Waterford	275	298	300	287	236	236	168	-107	-39%
Blessed Sacrament	Erie	1,096	940	973	929	908	908	604	-492	-45%
Holy Cross	Fairview	495	507	440	408	324	324	244	-251	-51%
Our Lady of Peace	Erie	1,901	1,870	1,650	1,449	1,374	1,374	918	-983	-52%
Our Lady of the Lake	Edinboro	444	514	468	415	420	420	325	-119	-27%
Sacred Heart of Jesus <sup>1</sup>	Erie	545	548	416	362	338	338	160	-385	-71%
St. Andrew <sup>1</sup>	Erie	345	273	245	176	175	175	96	-249	-72%
St. Francis Xavier	McKean	386	340	335	374	408	408	338	-48	-12%
St. George	Erie	1,250	1,198	1,174	1,163	1,167	1,167	668	-582	-47%
St. John the Evangelist	Girard	311	298	248	269	251	251	177	-134	-43%
St. Joseph/Bread of Life Community	Erie	696	686	676	679	681	681	435	-261	-38%
St. Jude the Apostle	Erie	1,555	1,541	1,522	1,216	1,057	1,057	676	-879	-57%
St. Julia	Erie	356	310	306	277	297	297	176	-180	-51%
St. Lawrence the Martyr	Albion	210	258	229	152	144	144	105	-105	-50%
St. Paul <sup>1</sup>	Erie	174	174	174	170	158	158	140	-34	-20%
St. Peter Cathedral	Erie	545	574	639	672	705	705	461	-84	-15%
St. Stephen of Hungary/Inglesia De San Esteban	Erie	188	206	237	241	230	230	147	-41	-22%
<b>Total</b>		<b>10,772</b>	<b>10,535</b>	<b>10,032</b>	<b>9,239</b>	<b>8,873</b>	<b>8,873</b>	<b>5,838</b>	<b>-4,934</b>	<b>-46%</b>

Number in italics indicates estimate based on trend as data was not provided

<sup>1</sup> Partner Parishes

Source: Diocese of Erie

**Observations:**

1. Mass attendance around the country has been adversely impacted by Covid. The average Mass attendance in the deanery is 9,166 people per weekend. The yearly averages have been declining over the seven-year period.
2. Average Mass attendance from last year, based on a deanery total parish population of 23,800 members, is 24.5%. Mass attendance tends to be lower on the East Coast and is in the 30-31% range nationally.

**Figure 23**  
**2021 Number of Weekend Masses**

Parish	Location	Number of Masses	One-Time Seating Capacity
All Saints	Waterford	2	350
Blessed Sacrament	Erie	4	800
Holy Cross	Fairview	2	567
Our Lady of Peace	Erie	5	900
Our Lady of the Lake	Edinboro	4	420
Sacred Heart of Jesus <sup>1</sup>	Erie	1	640
St. Andrew <sup>1</sup>	Erie	1	425
St. Francis Xavier	McKean	3	500
St. George	Erie	4	900
St. John the Evangelist	Girard	2	375
St. Joseph/Bread of Life Community	Erie	4	550
St. Jude the Apostle	Erie	4	900
St. Julia	Erie	2	250
St. Lawrence the Martyr	Albion	2	680
St. Paul <sup>1</sup>	Erie	1	300
St. Peter Cathedral	Erie	4	886
St. Stephen of Hungary/Inglesia De San Esteban	Erie	3	200
<b>Total</b>		<b>48</b>	<b>9,643</b>

<sup>1</sup> Partner Parishes

Source: Diocese of Erie

**Observations:**

1. Last year on average, fewer than 6,000 people attended Masses in the deanery. With a seating capacity at all the churches of 9,643 seats, all deanery Mass attendees could be accommodated at one Mass at each site with room to spare. Each parish averages approximately 3 Masses per weekend. There may be more Masses than necessary in the deanery.
2. A rule of thumb regarding Sunday Masses is that the congregation should be at least 50% full to justify a Mass time. If a church is more than 90% full (Christmas and Easter excluded), people will be inclined to go elsewhere.
3. Scheduling Masses in “prime times” is also a factor in Mass attendance. Early morning Masses are usually less well-attended than mid-morning ones. Late Saturday afternoon Masses are better attended than early evening ones.

**Figure 24**  
**2020-21 Race/Ethnicity**

Parish	Location	Black	Asian	Caucasian	Hispanic	Other	
All Saints	Waterford	0%	0%	98%	0%	1%	
Blessed Sacrament	Erie	1%	0%	98%	0%	1%	
Holy Cross	Fairview	0%	0%	100%	0%	0%	
Our Lady of Peace	Erie	0%	0%	100%	0%	0%	
Our Lady of the Lake	Edinboro	0%	0%	99%	1%	0%	
Sacred Heart of Jesus <sup>1</sup>	Erie	0%	0%	100%	0%	0%	
St. Andrew <sup>1</sup>	Erie	0%	0%	100%	0%	0%	
St. Francis Xavier	McKean	<i>no data available</i>					
St. George	Erie	3%	0%	93%	3%	0%	
St. John the Evangelist	Girard	0%	0%	100%	0%	0%	
St. Joseph/Bread of Life Community	Erie	0%	0%	100%	0%	0%	
St. Jude the Apostle	Erie	0%	0%	42%	0%	58%	
St. Julia	Erie	0%	0%	100%	0%	0%	
St. Lawrence the Martyr	Albion	0%	1%	99%	1%	0%	
St. Paul <sup>1</sup>	Erie	0%	0%	100%	0%	0%	
St. Peter Cathedral	Erie	0%	0%	100%	0%	0%	
St. Stephen of Hungary/Inglesia De San Esteban	Erie	<i>no data available</i>					
<b>Total</b>		<b>1%</b>	<b>0%</b>	<b>91%</b>	<b>1%</b>	<b>8%</b>	

<sup>1</sup> Partner Parishes

Source: Diocese of Erie

**Observations:**

1. Most of the parishes have high percentages of Caucasians in their memberships.
2. There are a few parishes which have varying degrees of racial and ethnic diversity.

**Figure 25a**  
**K to 8 Parish School of Religion Education Enrollment**

Parish	Location	14-15	15-16	16-17	17-18	18-19	19-20	20-21	Change 14-15 to 20-21	
									Number	Percent
All Saints	Waterford	100	69	49	44	41	37	36	-64	-64%
Blessed Sacrament	Erie	110	116	101	101	41	109	101	-9	-8%
Holy Cross	Fairview	133	68	58	56	47	40	23	-110	-83%
Our Lady of Peace	Erie	155	234	209	195	178	168	74	-81	-52%
Our Lady of the Lake	Edinboro	100	127	117	108	75	74	71	-29	-29%
Sacred Heart of Jesus <sup>1</sup>	Erie	21	11	26	14	13	12	32	11	52%
St. Andrew <sup>1</sup>	Erie	36	58	58	58	58	45	32	-4	-11%
St. Francis Xavier	McKean	93	103	88	81	56	85	85	-8	-9%
St. George	Erie	129	158	157	110	95	90	94	-35	-27%
St. John the Evangelist	Girard	73	35	70	70	70	27	27	-46	-63%
St. Joseph/Bread of Life Community	Erie	88	92	93	80	74	10	117	29	33%
St. Jude the Apostle	Erie	163	108	145	167	156	150	150	-13	-8%
St. Julia	Erie	72	85	54	45	27	27	27	-45	-63%
St. Lawrence the Martyr	Albion	23	19	19	25	14	20	17	-6	-26%
St. Paul <sup>1</sup>	Erie	0	0	0	0	0	0	0	0	
St. Peter Cathedral	Erie	15	0	0	0	0	0	0	-15	-100%
St. Stephen of Hungary/Inglesia De San Esteban	Erie	28	37	36	41	27	27	27	-1	-4%
<b>Total</b>		<b>1,339</b>	<b>1,320</b>	<b>1,280</b>	<b>1,195</b>	<b>972</b>	<b>921</b>	<b>913</b>	<b>-426</b>	<b>-32%</b>

Number in italics indicates estimate based on trend as data was not provided

<sup>1</sup> Partner Parishes

Source: Diocese of Erie



**Figure 25b**  
**9 to 12 Parish School of Religion Education Enrollment**

Parish	City	14-15	15-16	16-17	17-18	18-19	19-20	20-21	Change 14-15 to 20-21	
									Number	Percent
All Saints	Waterford	43	50	65	60	55	50	41	-2	-5%
Blessed Sacrament	Erie	83	48	59	59	101	70	0	-83	-100%
Holy Cross	Fairview	43	110	120	115	51	7	63	20	47%
Our Lady of Peace	Erie	291	194	187	128	123	130	150	-141	-48%
Our Lady of the Lake	Edinboro	70	42	39	45	44	36	29	-41	-59%
Sacred Heart of Jesus <sup>1</sup>	Erie	20	17	14	15	7	6	6	-14	-70%
St. Andrew <sup>1</sup>	Erie	20	39	33	33	33	20	20	0	0%
St. Francis Xavier	McKean	48	38	25	28	46	32	32	-16	-33%
St. George	Erie	100	95	85	70	76	25	35	-65	-65%
St. John the Evangelist	Girard	47	74	30	30	30	41	41	-6	-13%
St. Joseph/Bread of Life Community	Erie	19	4	26	61	40	7	7	-12	-63%
St. Jude the Apostle	Erie	106	125	59	82	72	110	103	-3	-3%
St. Julia	Erie	25	16	20	40	0	0	13	-12	-48%
St. Lawrence the Martyr	Albion	33	31	25	20	28	17	13	-20	-61%
St. Paul <sup>1</sup>	Erie	0	0	0	0	0	0	0	0	
St. Peter Cathedral	Erie	30	0	0	0	0	0	0	-30	-100%
St. Stephen of Hungary/Inglesia De San Esteban	Erie	9	10	8	5	27	27	27	18	
<b>Total</b>		<b>987</b>	<b>893</b>	<b>795</b>	<b>791</b>	<b>733</b>	<b>578</b>	<b>580</b>	<b>-407</b>	<b>-41%</b>

Number in italics indicates estimate based on trend as data was not provided

<sup>1</sup> Partner Parishes

Source: Diocese of Erie

**Observations:**

1. Both elementary and high school religious education enrollments are in downward trends.
2. Class sizes in most parishes are small except for a few of the larger programs.
3. On average, parishes enroll 75% of their elementary students but just 50% of their high school students. The total numbers of children and youth in the parish are needed to determine each parish's percentage of involvement in faith formation programs.

**Figure 26**  
**Youth RCIA Religion Education Enrollment**

Parish	City	14-15	15-16	16-17	17-18	18-19	19-20	20-21	Change 14-15 to 20-21	
									Number	Percent
All Saints	Waterford	0	0	0	0	2	0	0	0	
Blessed Sacrament	Erie	4	0	0	0	2	0	0	-4	-100%
Holy Cross	Fairview	0	0	0	0	0	0	0	0	
Our Lady of Peace	Erie	0	0	0	1	0	1	0	0	
Our Lady of the Lake	Edinboro	2	0	0	0	0	0	0	-2	-100%
Sacred Heart of Jesus <sup>1</sup>	Erie	0	0	0	0	0	0	0	0	
St. Andrew <sup>1</sup>	Erie	0	2	2	0	2	0	0	0	
St. Francis Xavier	McKean	1	0	0	0	1	0		-1	-100%
St. George	Erie	8	12	3	0	2	1	1	-7	-88%
St. John the Evangelist	Girard	0	1	0	0	0	0	0	0	
St. Joseph/Bread of Life Community	Erie	0	0	0	0	0	0	2	2	
St. Jude the Apostle	Erie	2	0	2	2	9	13	2	0	0%
St. Julia	Erie	0	0	0	0	0	0	0	0	
St. Lawrence the Martyr	Albion	0	0	0	0	0	0	0	0	
St. Paul <sup>1</sup>	Erie	0	0	0	0	0	0	0	0	
St. Peter Cathedral	Erie	1	0	0	0	0	0	0	-1	-100%
St. Stephen of Hungary/Inglesia De San Esteban	Erie	0	0	0	0	0	0	0	0	
<b>Total</b>		<b>18</b>	<b>15</b>	<b>7</b>	<b>3</b>	<b>18</b>	<b>15</b>	<b>5</b>	<b>-13</b>	<b>-72%</b>

Number in italics indicates estimate based on trend as data was not provided

<sup>1</sup> Partner Parishes

Source: Diocese of Erie

**Observations:**

1. There are several parishes which have more involvement and activity in this area of sacramental initiation.
2. These numbers are an indicator of evangelization activity with families.

**Figure 27**  
**Professional Parish Staff**

Parish	Location	Priests		Other Personnel		Total Number of Employees
		Full-Time	Part-Time	Full-Time	Part-Time	
All Saints	Waterford	1	0	0	4	5
Blessed Sacrament	Erie	1	0	3	5	9
Holy Cross	Fairview	1	0	0	5	6
Our Lady of Peace	Erie	2	0	5	9	16
Our Lady of the Lake	Edinboro	1	0	1	4	6
Sacred Heart of Jesus <sup>1</sup>	Erie	1	0	1	4	6
St. Andrew <sup>1</sup>	Erie	1	0	2	4	7
St. Francis Xavier	McKean	<i>No data provided</i>				
St. George	Erie	3	0	5	1	9
St. John the Evangelist	Girard	1	0	2	6	9
St. Joseph/Bread of Life Community	Erie	0	0	0	0	0
St. Jude the Apostle	Erie	1	0	4	11	16
St. Julia	Erie	1	0	3	2	6
St. Lawrence the Martyr	Albion	1	0	0	9	10
St. Paul <sup>1</sup>	Erie	1	0	2	4	7
St. Peter Cathedral	Erie	1	0	0	12	13
St. Stephen of Hungary/Inglesia De San Esteban	Erie	<i>No data provided</i>				
<b>Total</b>		<b>17</b>	<b>0</b>	<b>28</b>	<b>80</b>	<b>125</b>

<sup>1</sup> Partner Parishes

Source: Diocese of Erie

**Observations:**

1. The average number of full- and part-time staff at the 14 parishes in the deanery is 9.
2. In terms of lay staff, there are 2.8 times more part-time staff than full-time.
3. The priest-to-people ratio in the deanery is one priest for 1,400 people.

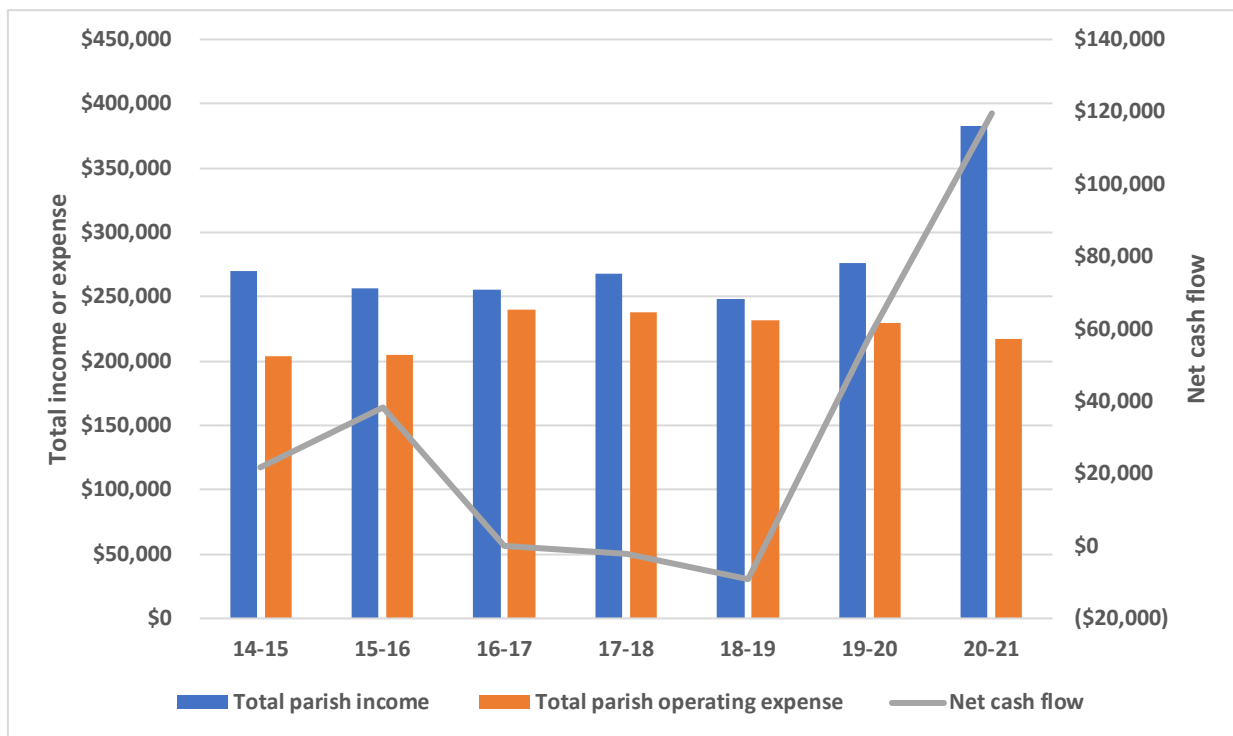
## ERIE WEST DEANERY SUMMARY OF PARISH ACCOUNTS

Observations about parish finances are at the end of all the tables and graphs. Note: 2021-22 budgets have not been submitted to the Diocese yet.

**Figure 28a**  
**All Saints, Waterford**

	Actual						
	14-15	15-16	16-17	17-18	18-19	19-20	20-21
Total parish income	\$269,812	\$256,663	\$255,109	\$267,471	\$248,241	\$276,220	\$382,923
Total parish operating expense	203,979	204,395	240,024	237,471	231,141	229,453	216,845
Balance	65,833	52,268	15,085	30,000	17,100	46,767	166,078
Total capital expenditures	44,084	13,907	15,188	32,363	26,400	8,710	26,737
Net loan proceeds (principal)	0	0	0	0	0	19,700	(19,700)
<b>Net cash flow</b>	<b>\$21,749</b>	<b>\$38,361</b>	<b>(\$103)</b>	<b>(\$2,363)</b>	<b>(\$9,300)</b>	<b>\$57,757</b>	<b>\$119,641</b>

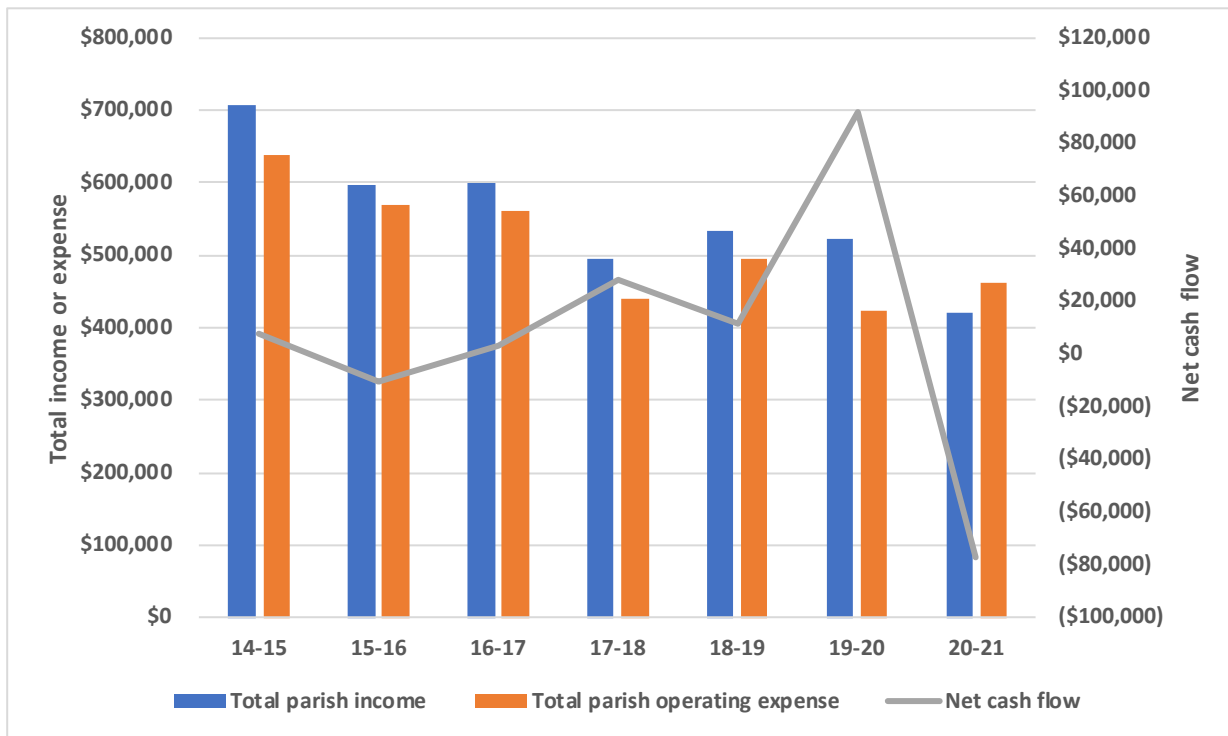
Source: Diocese of Erie



**Figure 28b**  
**Blessed Sacrament, Erie**

	Actual						
	14-15	15-16	16-17	17-18	18-19	19-20	20-21
Total parish income	\$707,357	\$597,598	\$600,401	\$494,690	\$533,664	\$523,658	\$420,958
Total parish operating expense	636,920	569,221	561,546	440,287	494,173	422,489	463,227
Balance	70,437	28,377	38,855	54,403	39,491	101,169	(42,269)
Total capital expenditures	62,671	38,697	35,751	26,369	27,950	43,625	0
Net loan proceeds (principal)	0	0	0	0	0	34,578	(34,578)
<b>Net cash flow</b>	<b>\$7,766</b>	<b>(\$10,320)</b>	<b>\$3,104</b>	<b>\$28,034</b>	<b>\$11,541</b>	<b>\$92,122</b>	<b>(\$76,847)</b>

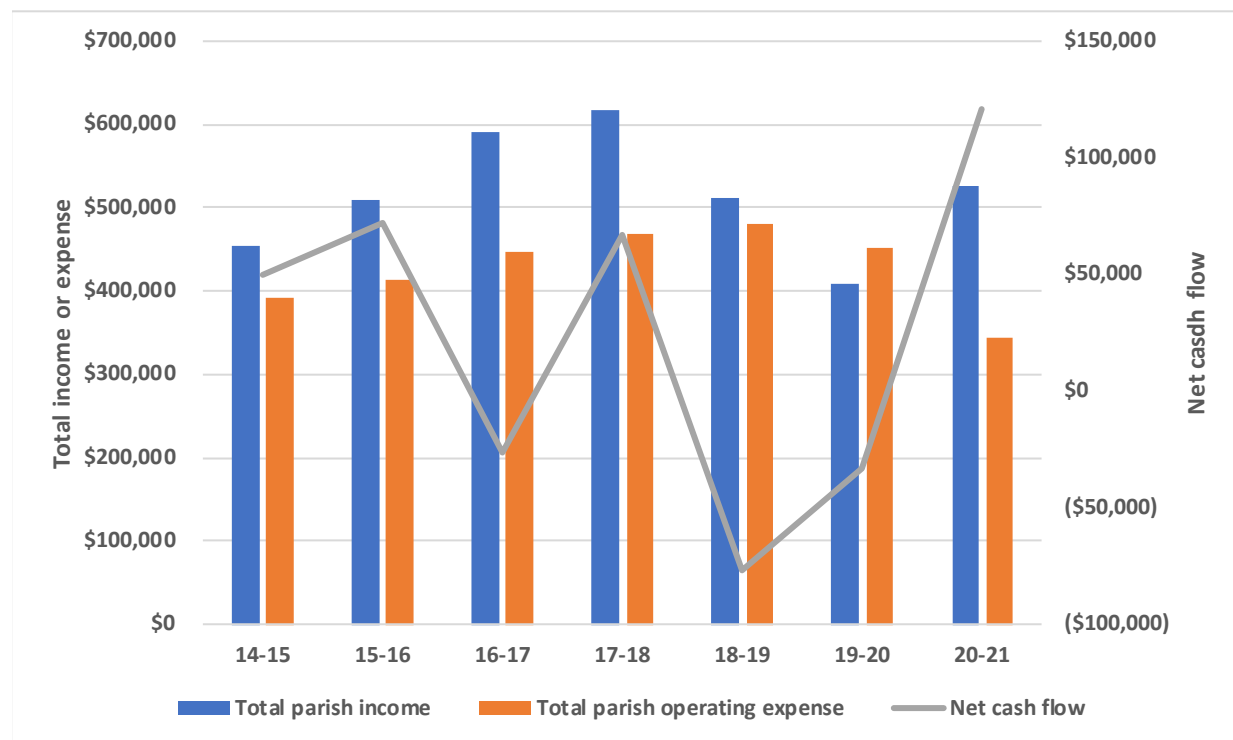
Source: Diocese of Erie



**Figure 28c**  
**Holy Cross, Fairview**

	Actual						
	14-15	15-16	16-17	17-18	18-19	19-20	20-21
Total parish income	\$453,803	\$509,353	\$590,997	\$616,736	\$511,306	\$407,627	\$526,121
Total parish operating expense	392,891	413,602	447,261	468,555	480,084	452,161	342,875
Balance	60,912	95,751	143,736	148,181	31,222	(44,534)	183,246
Total capital expenditures	11,500	23,624	328,799	6,721	24,638	89,479	3,627
Net loan proceeds (principal)	0	0	158,559	(74,771)	(83,788)	100,972	(59,175)
<b>Net cash flow</b>	<b>\$49,412</b>	<b>\$72,127</b>	<b>(\$26,504)</b>	<b>\$66,689</b>	<b>(\$77,204)</b>	<b>(\$33,041)</b>	<b>\$120,444</b>

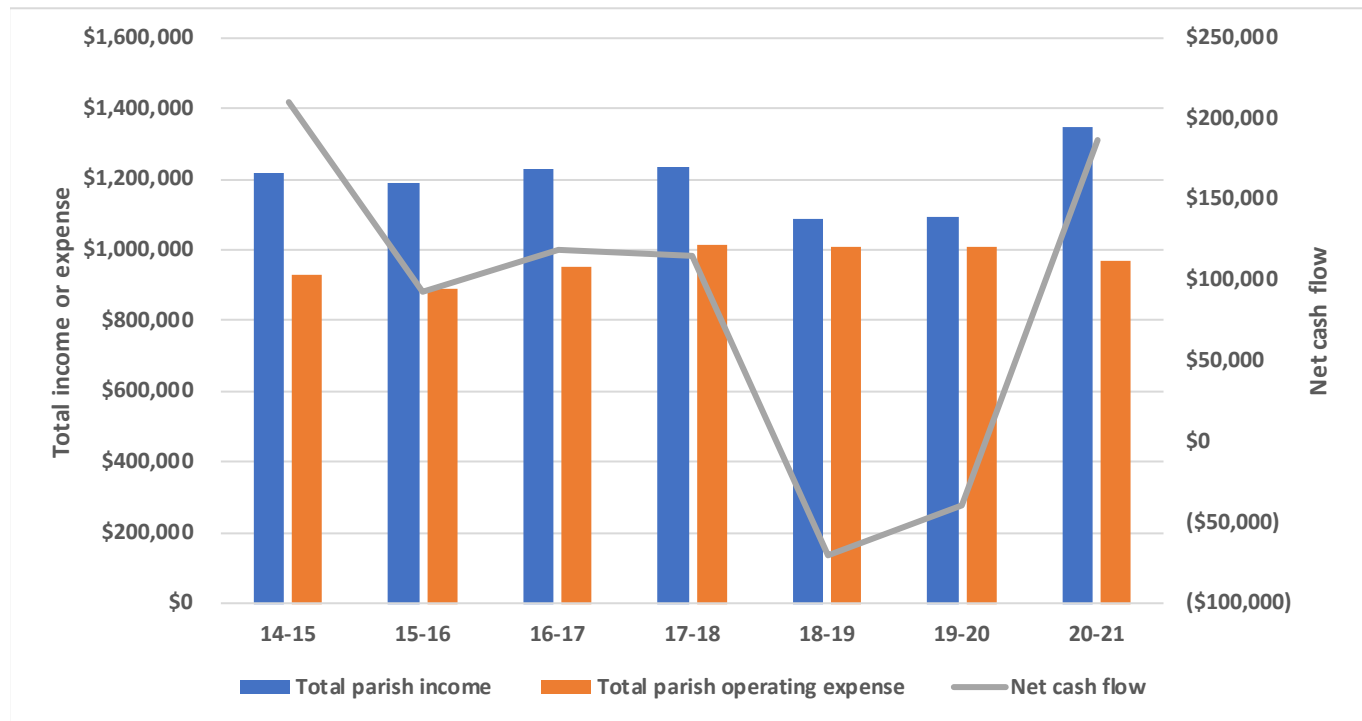
Source: Diocese of Erie



**Figure 28d**  
**Our Lady of Peace, Erie**

	Actual						
	14-15	15-16	16-17	17-18	18-19	19-20	20-21
Total parish income	\$1,217,263	\$1,190,035	\$1,230,821	\$1,233,766	\$1,085,901	\$1,095,853	\$1,349,028
Total parish operating expense	927,591	890,663	952,430	1,012,584	1,009,650	1,007,665	968,766
Balance	289,672	299,372	278,391	221,182	76,251	88,188	380,262
Total capital expenditures	79,297	206,856	159,577	106,549	146,426	198,283	121,780
Net loan proceeds (principal)	0	0	0	0	0	70,980	(72,125)
<b>Net cash flow</b>	<b>\$210,375</b>	<b>\$92,516</b>	<b>\$118,814</b>	<b>\$114,633</b>	<b>(\$70,175)</b>	<b>(\$39,115)</b>	<b>\$186,357</b>

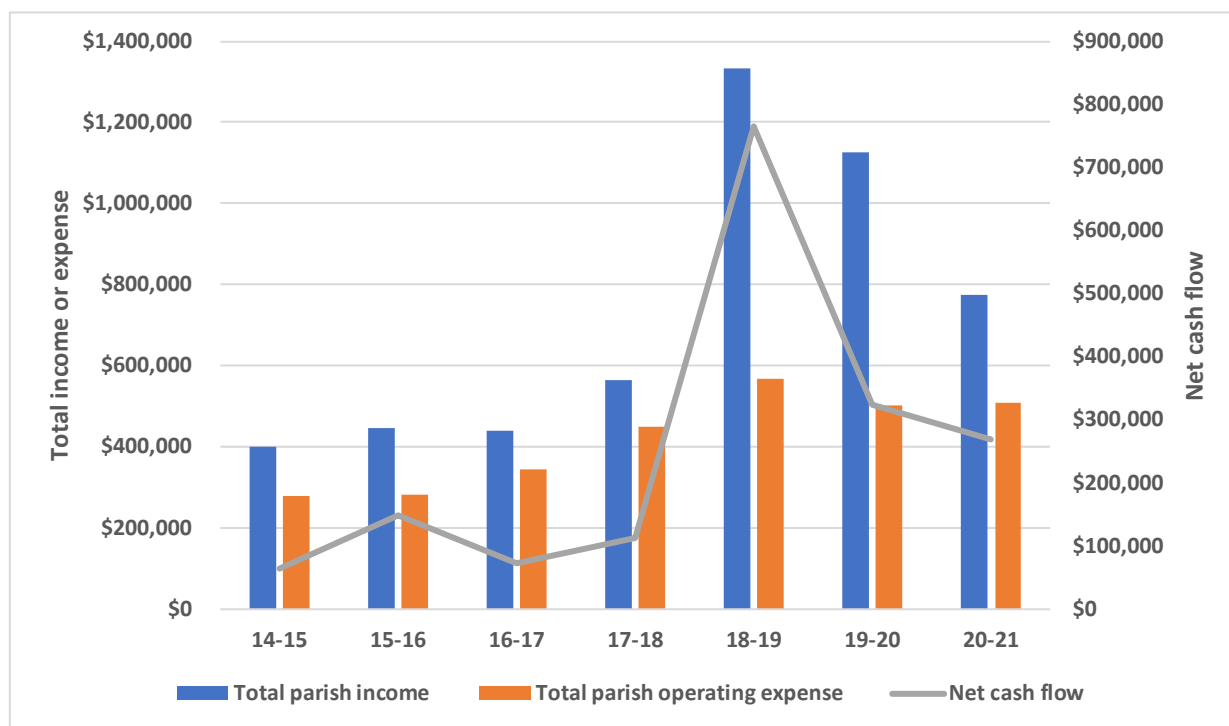
Source: Diocese of Erie



**Figure 28e**  
**Our Lady of the Lake, Edinboro**

	Actual						
	14-15	15-16	16-17	17-18	18-19	19-20	20-21
Total parish income	\$399,073	\$444,879	\$441,008	\$563,763	\$1,331,989	\$1,125,631	\$775,584
Total parish operating expense	277,872	280,330	345,204	450,144	566,489	500,321	509,584
Balance	121,201	164,549	95,804	113,619	765,500	625,310	266,000
Total capital expenditures	89,449	16,310	24,078	0	0	334,201	0
Net loan proceeds (principal)	33,002	0	0	0	0	32,011	2,143
<b>Net cash flow</b>	<b>\$64,754</b>	<b>\$148,239</b>	<b>\$71,726</b>	<b>\$113,619</b>	<b>\$765,500</b>	<b>\$323,120</b>	<b>\$268,143</b>

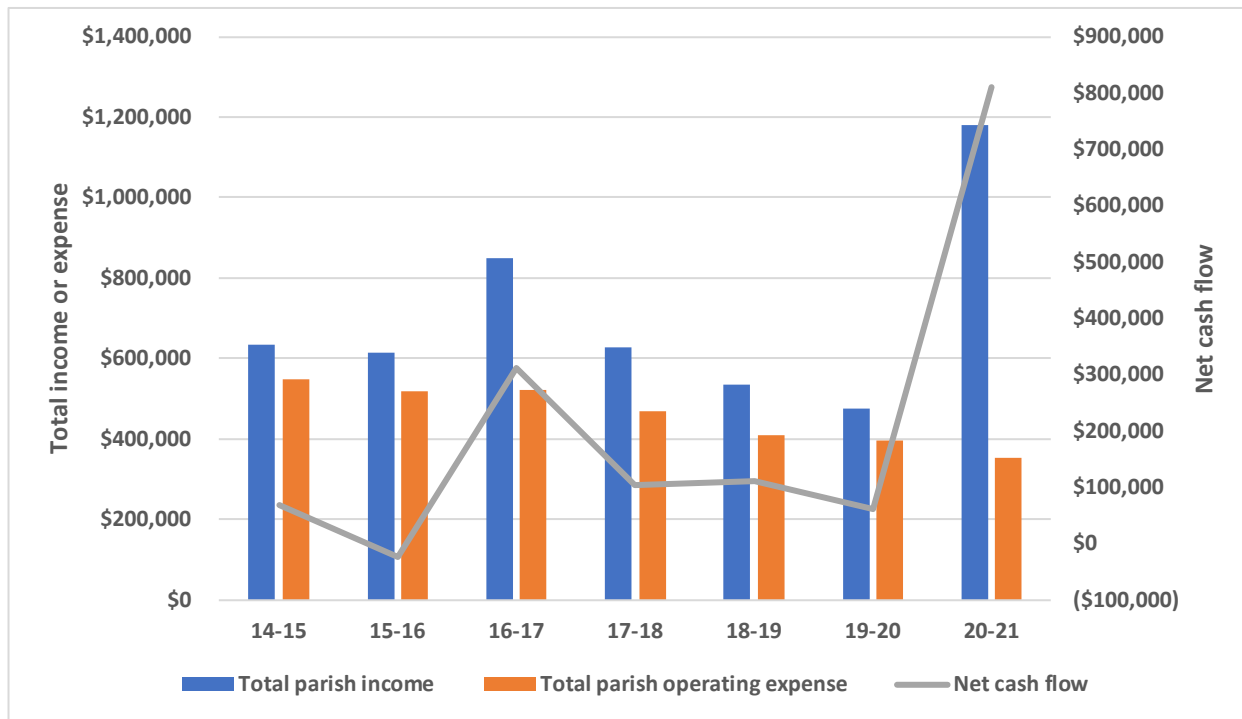
Source: Diocese of Erie



**Figure 28f**  
**Sacred Heart of Jesus, Erie**

	14-15	15-16	16-17	Actual			
				17-18	18-19	19-20	20-21
Total parish income	\$634,697	\$613,387	\$850,552	\$627,225	\$534,900	\$476,851	\$1,180,364
Total parish operating expense	547,287	519,649	522,445	470,185	410,283	395,186	352,589
Balance	87,410	93,738	328,107	157,040	124,617	81,665	827,775
Total capital expenditures	18,196	116,541	15,938	52,365	14,138	20,585	17,585
Net loan proceeds (principal)	0	0	0	0	0	0	0
<b>Net cash flow</b>	<b>\$69,214</b>	<b>(\$22,803)</b>	<b>\$312,169</b>	<b>\$104,675</b>	<b>\$110,479</b>	<b>\$61,080</b>	<b>\$810,190</b>

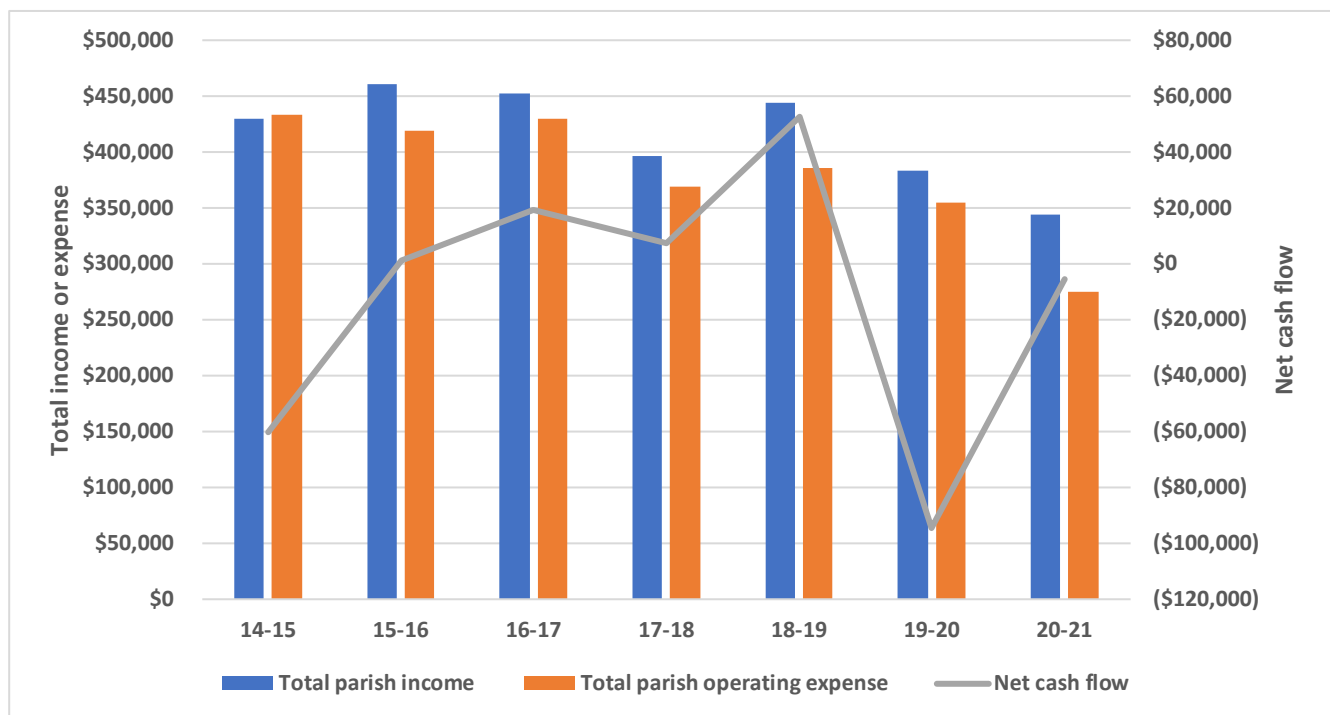
Source: Diocese of Erie



**Figure 28g**  
**St. Andrew, Erie**

	Actual						
	14-15	15-16	16-17	17-18	18-19	19-20	20-21
Total parish income	\$429,304	\$460,274	\$452,574	\$396,667	\$443,907	\$382,747	\$343,806
Total parish operating expense	433,475	418,658	429,575	369,212	385,942	354,642	274,654
Balance	(4,171)	41,616	22,999	27,455	57,965	28,105	69,152
Total capital expenditures	56,092	40,462	3,584	19,963	5,273	109,365	61,285
Net loan proceeds (principal)	0	0	0	0	0	(13,320)	(13,320)
<b>Net cash flow</b>	<b>(\$60,263)</b>	<b>\$1,154</b>	<b>\$19,415</b>	<b>\$7,492</b>	<b>\$52,692</b>	<b>(\$94,580)</b>	<b>(\$5,453)</b>

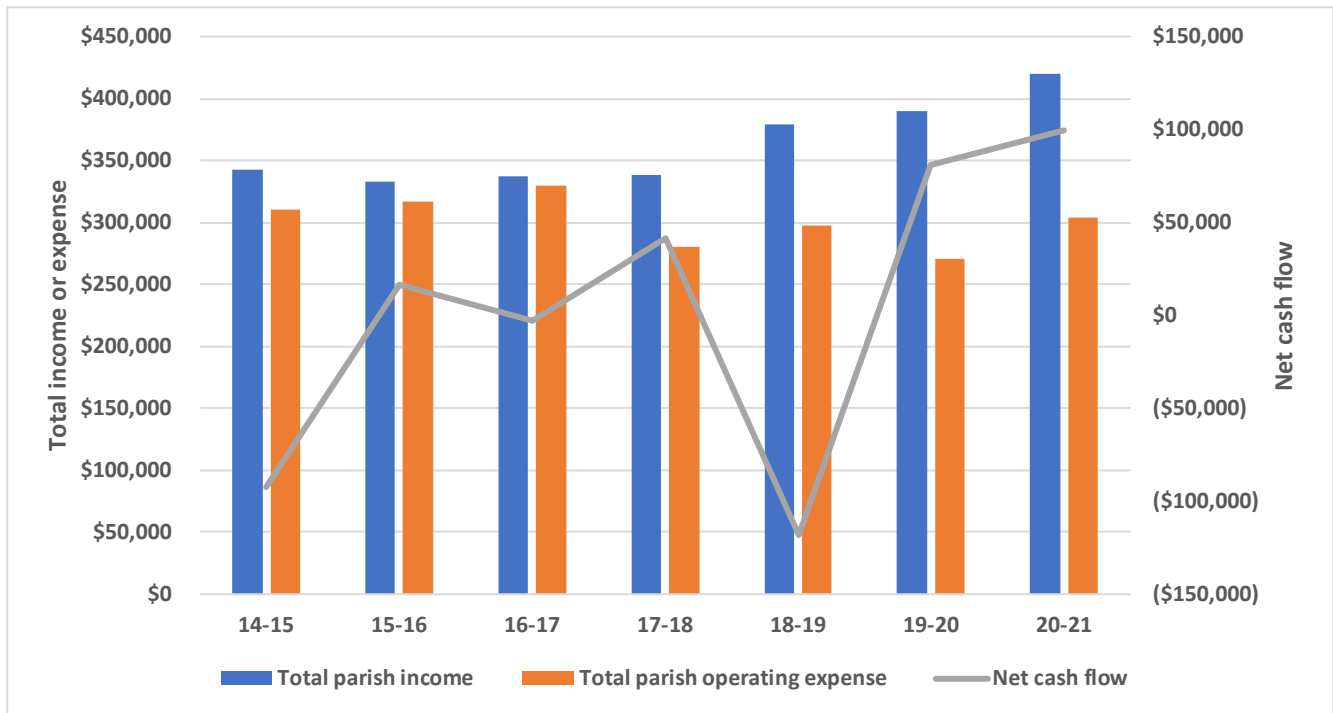
Source: Diocese of Erie



**Figure 28h**  
**St. Francis Xavier, McKean**

	Actual						
	14-15	15-16	16-17	17-18	18-19	19-20	20-21
Total parish income	\$342,197	\$333,369	\$337,580	\$338,444	\$379,613	\$390,170	\$419,999
Total parish operating expense	310,859	316,820	329,599	280,088	296,961	270,233	303,897
Balance	31,338	16,549	7,981	58,356	82,652	119,937	116,102
Total capital expenditures	123,713	0	11,047	16,704	200,531	63,901	7,441
Net loan proceeds (principal)	0	0	0	0	0	24,842	(9,405)
<b>Net cash flow</b>	<b>(\$92,375)</b>	<b>\$16,549</b>	<b>(\$3,066)</b>	<b>\$41,652</b>	<b>(\$117,879)</b>	<b>\$80,878</b>	<b>\$99,256</b>

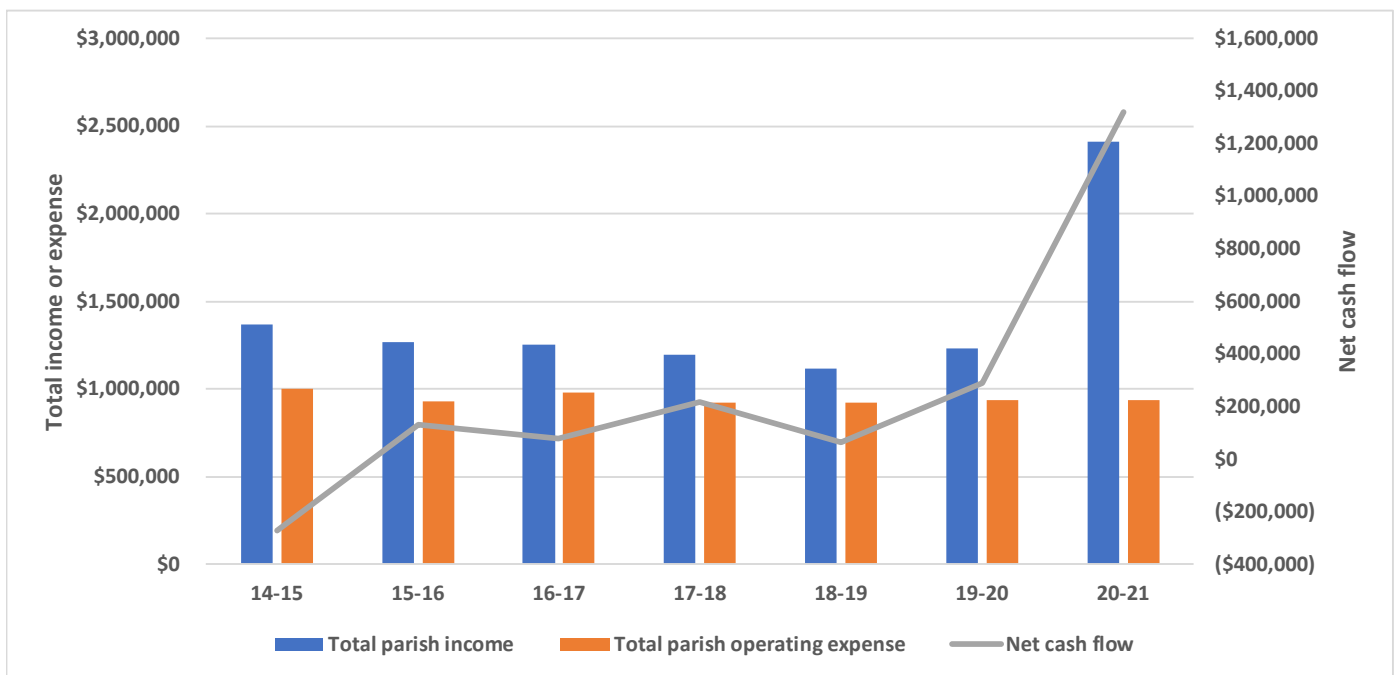
Source: Diocese of Erie



**Figure 28i**  
**St. George, Erie**

	Actual						
	14-15	15-16	16-17	17-18	18-19	19-20	20-21
Total parish income	\$1,366,270	\$1,271,048	\$1,250,130	\$1,195,938	\$1,118,109	\$1,232,838	\$2,411,763
Total parish operating expense	1,002,191	932,723	981,311	925,887	924,523	934,960	938,573
Balance	364,079	338,325	268,819	270,051	193,586	297,878	1,473,190
Total capital expenditures	612,421	36,924	120,772	54,686	128,572	73,034	87,863
Net loan proceeds (principal)	(24,377)	(171,483)	(68,189)	0	0	64,500	(64,700)
<b>Net cash flow</b>	<b>(\$272,719)</b>	<b>\$129,918</b>	<b>\$79,858</b>	<b>\$215,365</b>	<b>\$65,014</b>	<b>\$289,344</b>	<b>\$1,320,627</b>

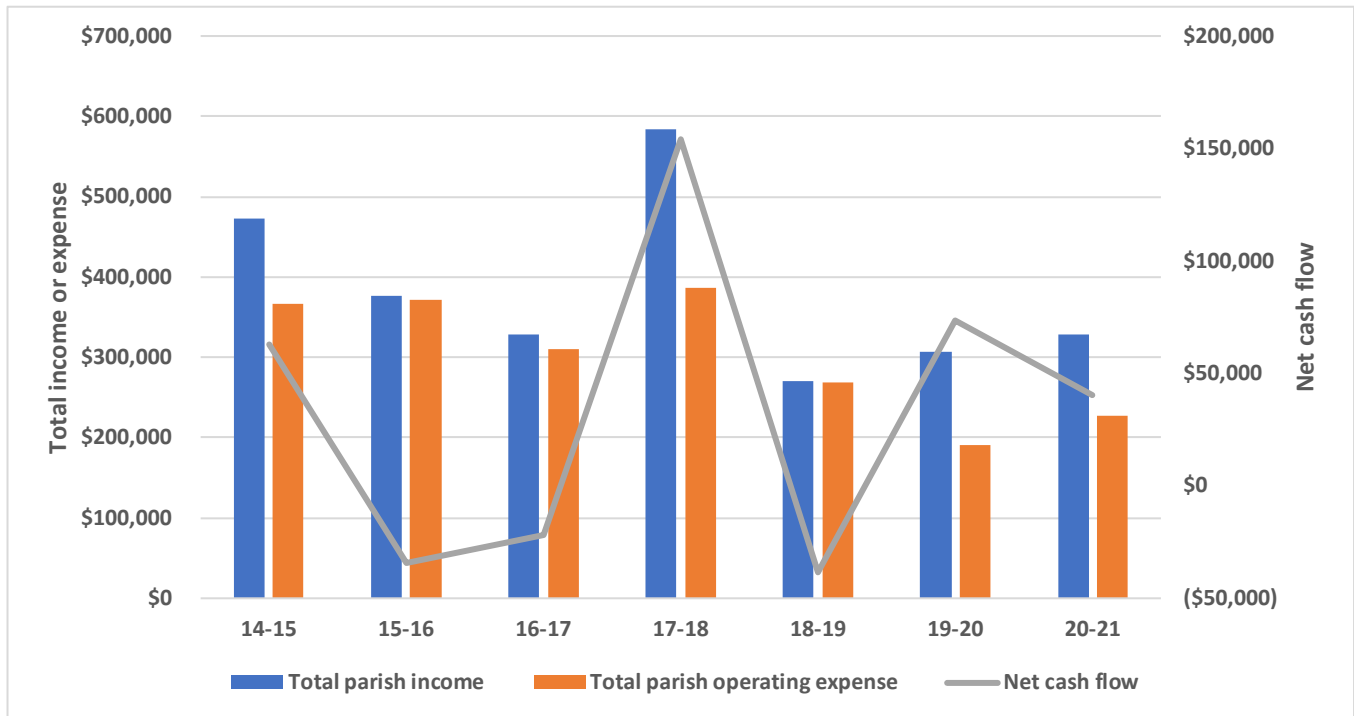
Source: Diocese of Erie



**Figure 28j**  
**St. John the Evangelist, Girard**

	Actual						
	14-15	15-16	16-17	17-18	18-19	19-20	20-21
Total parish income	\$472,945	\$377,141	\$327,671	\$583,069	\$270,930	\$307,218	\$327,931
Total parish operating expense	365,999	371,674	310,091	386,984	267,782	190,654	227,634
Balance	106,946	5,467	17,580	196,085	3,148	116,564	100,297
Total capital expenditures	4,195	11,529	12,346	11,589	10,801	39,212	21,403
Net loan proceeds (principal)	(40,000)	(28,537)	(27,202)	(30,325)	(30,748)	(3,907)	(38,467)
<b>Net cash flow</b>	<b>\$62,751</b>	<b>(\$34,599)</b>	<b>(\$21,968)</b>	<b>\$154,171</b>	<b>(\$38,401)</b>	<b>\$73,445</b>	<b>\$40,427</b>

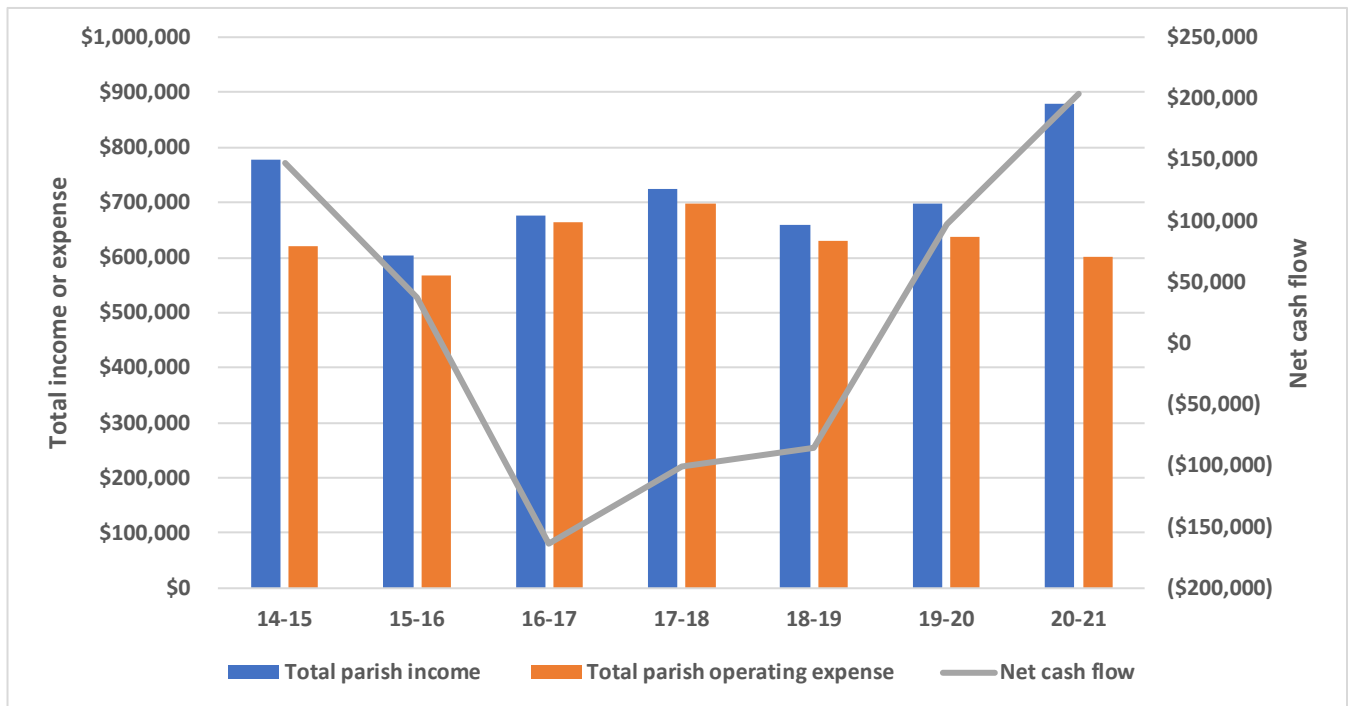
Source: Diocese of Erie



**Figure 28k**  
**St. Joseph/Bread of Life Community, Erie**

	Actual						
	14-15	15-16	16-17	17-18	18-19	19-20	20-21
Total parish income	\$776,506	\$604,448	\$676,948	\$725,644	\$658,761	\$697,924	\$879,967
Total parish operating expense	619,771	567,469	663,242	697,808	629,488	637,535	601,433
Balance	156,735	36,979	13,706	27,836	29,273	60,389	278,534
Total capital expenditures	9,011	0	177,959	128,860	114,477	32,103	6,073
Net loan proceeds (principal)	0	0	0	0	0	68,526	(68,526)
<b>Net cash flow</b>	<b>\$147,724</b>	<b>\$36,979</b>	<b>(\$164,253)</b>	<b>(\$101,024)</b>	<b>(\$85,204)</b>	<b>\$96,812</b>	<b>\$203,935</b>

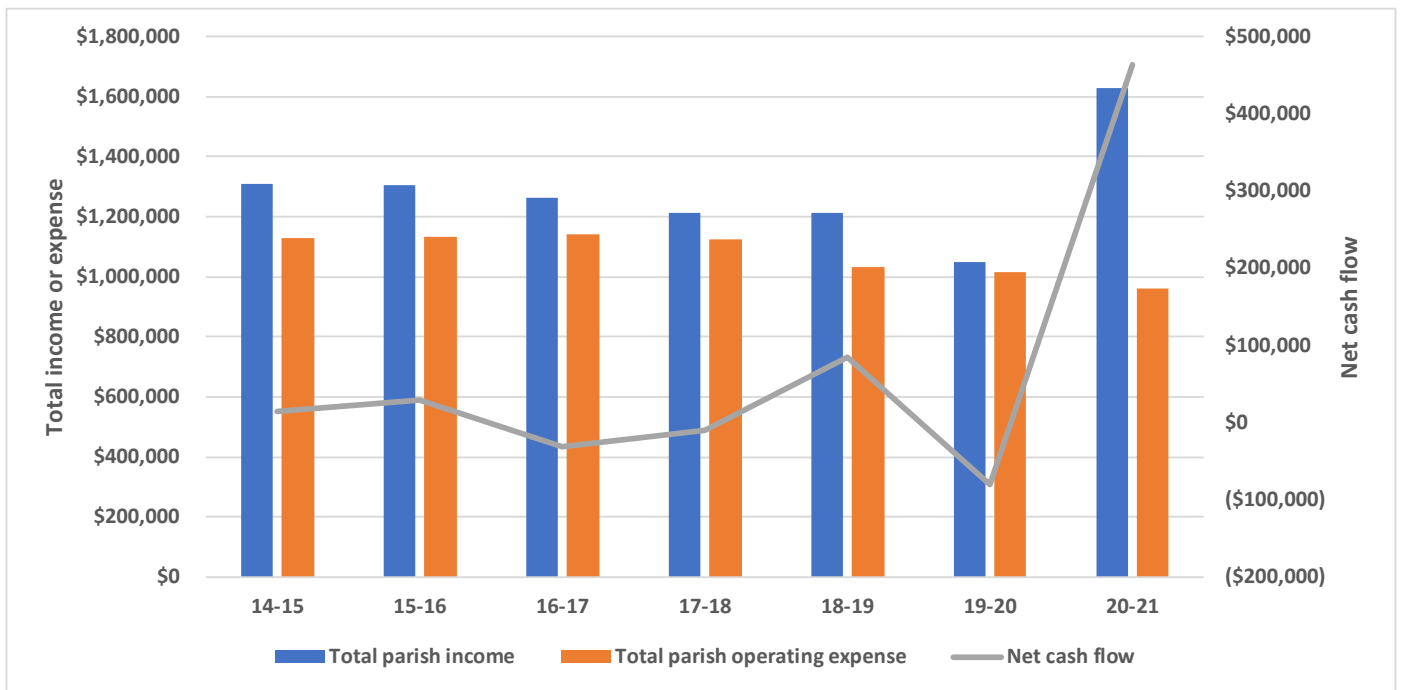
Source: Diocese of Erie



**Figure 28l**  
**St. Jude the Apostle, Erie**

	Actual						
	14-15	15-16	16-17	17-18	18-19	19-20	20-21
Total parish income	\$1,307,679	\$1,304,348	\$1,261,608	\$1,213,901	\$1,210,532	\$1,047,399	\$1,629,290
Total parish operating expense	1,127,537	1,133,451	1,140,795	1,122,290	1,033,075	1,016,534	961,698
Balance	180,142	170,897	120,813	91,611	177,457	30,865	667,592
Total capital expenditures	168,762	139,241	151,695	155,438	105,854	114,817	133,361
Net loan proceeds (principal)	2,726	(3,231)	(564)	53,284	13,250	4,441	(70,975)
<b>Net cash flow</b>	<b>\$14,106</b>	<b>\$28,425</b>	<b>(\$31,446)</b>	<b>(\$10,543)</b>	<b>\$84,853</b>	<b>(\$79,511)</b>	<b>\$463,256</b>

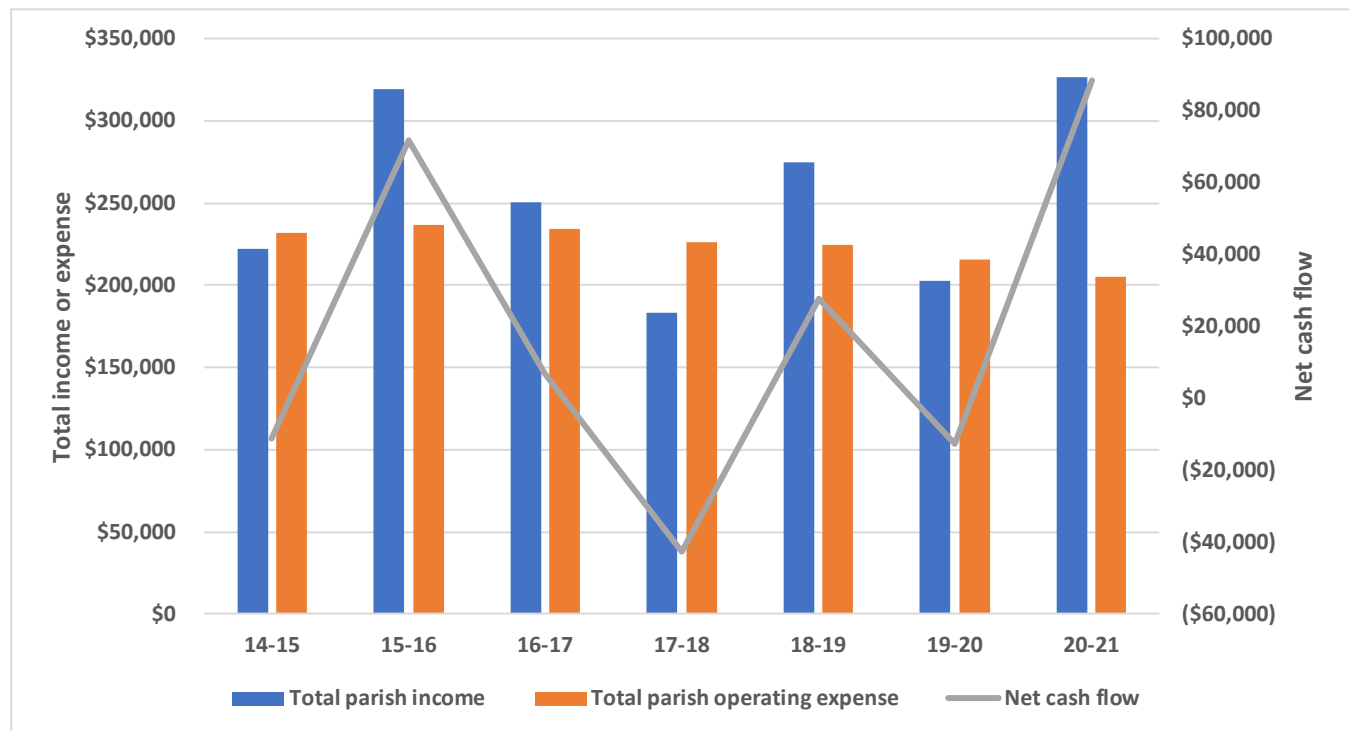
Source: Diocese of Erie



**Figure 28m**  
**St. Julia, Erie**

	Actual						
	14-15	15-16	16-17	17-18	18-19	19-20	20-21
Total parish income	\$222,395	\$319,052	\$250,760	\$183,363	\$274,487	\$202,644	\$326,140
Total parish operating expense	232,151	236,648	234,216	226,074	224,788	215,236	205,322
Balance	(9,756)	82,404	16,544	(42,711)	49,699	(12,592)	120,818
Total capital expenditures	1,600	10,800	9,600	0	22,231	0	32,390
Net loan proceeds (principal)	0	0	0	0	0	0	0
<b>Net cash flow</b>	<b>(\$11,356)</b>	<b>\$71,604</b>	<b>\$6,944</b>	<b>(\$42,711)</b>	<b>\$27,468</b>	<b>(\$12,592)</b>	<b>\$88,428</b>

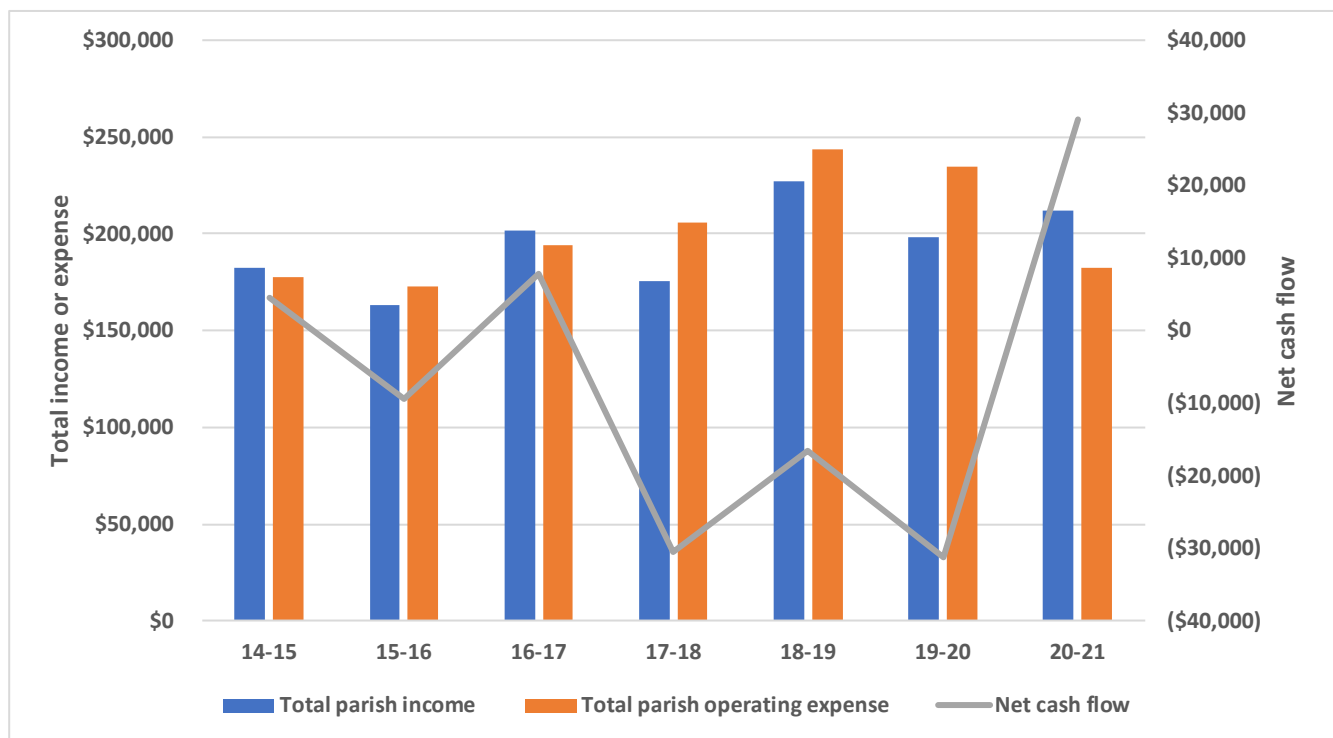
Source: Diocese of Erie



**Figure 28n**  
**St. Lawrence the Martyr, Albion**

	Actual						
	14-15	15-16	16-17	17-18	18-19	19-20	20-21
Total parish income	\$182,124	\$163,098	\$201,759	\$175,293	\$227,111	\$197,998	\$211,758
Total parish operating expense	177,624	172,475	193,984	205,815	243,729	234,464	182,645
Balance	4,500	(9,377)	7,775	(30,522)	(16,618)	(36,466)	29,113
Total capital expenditures	0	0	0	0	0	0	0
Net loan proceeds (principal)	0	0	0	0	0	5,217	0
<b>Net cash flow</b>	<b>\$4,500</b>	<b>(\$9,377)</b>	<b>\$7,775</b>	<b>(\$30,522)</b>	<b>(\$16,618)</b>	<b>(\$31,249)</b>	<b>\$29,113</b>

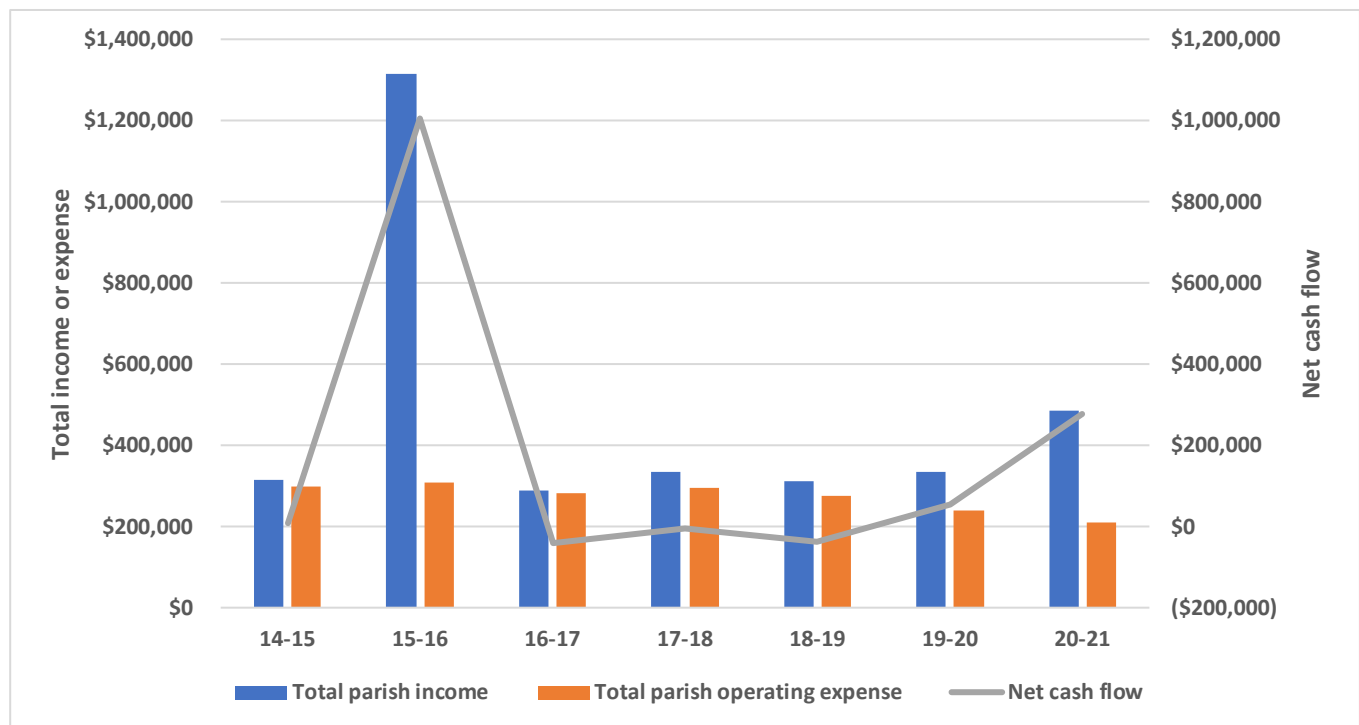
Source: Diocese of Erie



**Figure 28o**  
**St. Paul, Erie**

	Actual						
	14-15	15-16	16-17	17-18	18-19	19-20	20-21
Total parish income	\$316,571	\$1,313,591	\$289,143	\$336,306	\$313,071	\$334,384	\$487,602
Total parish operating expense	298,926	307,493	284,270	295,231	277,912	241,034	210,213
Balance	17,645	1,006,098	4,873	41,075	35,159	93,350	277,389
Total capital expenditures	7,042	0	46,306	43,715	73,015	37,864	300
Net loan proceeds (principal)	0	0	0	0	0	0	0
<b>Net cash flow</b>	<b>\$10,603</b>	<b>\$1,006,098</b>	<b>(\$41,433)</b>	<b>(\$2,640)</b>	<b>(\$37,856)</b>	<b>\$55,486</b>	<b>\$277,089</b>

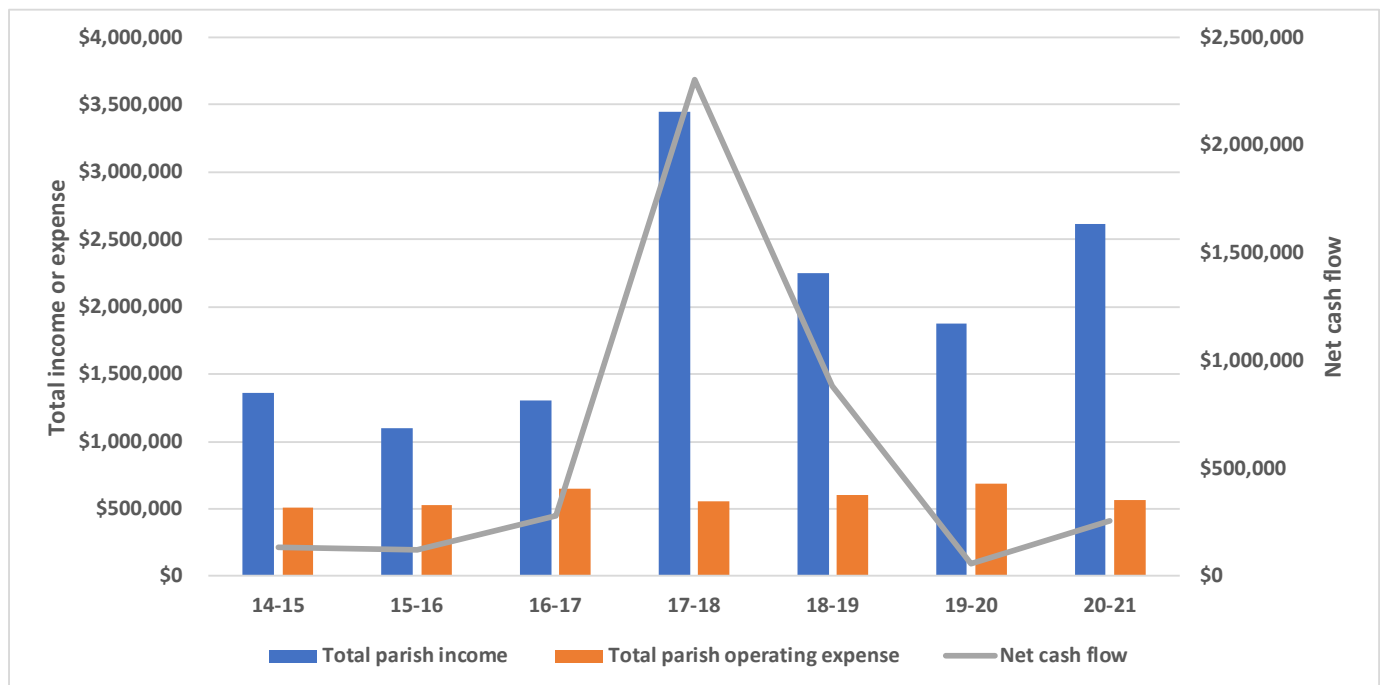
Source: Diocese of Erie



**Figure 28p**  
**St. Peter Cathedral, Erie**

	Actual						
	14-15	15-16	16-17	17-18	18-19	19-20	20-21
Total parish income	\$1,362,973	\$1,096,637	\$1,308,867	\$3,445,732	\$2,249,786	\$1,875,326	\$2,611,120
Total parish operating expense	509,820	531,674	644,763	553,670	603,569	685,672	567,427
Balance	853,153	564,963	664,104	2,892,062	1,646,217	1,189,654	2,043,693
Total capital expenditures	717,741	445,141	386,022	587,614	760,994	1,179,951	1,784,521
Net loan proceeds (principal)	0	0	0	0	0	49,500	0
<b>Net cash flow</b>	<b>\$135,412</b>	<b>\$119,822</b>	<b>\$278,082</b>	<b>\$2,304,448</b>	<b>\$885,223</b>	<b>\$59,203</b>	<b>\$259,172</b>

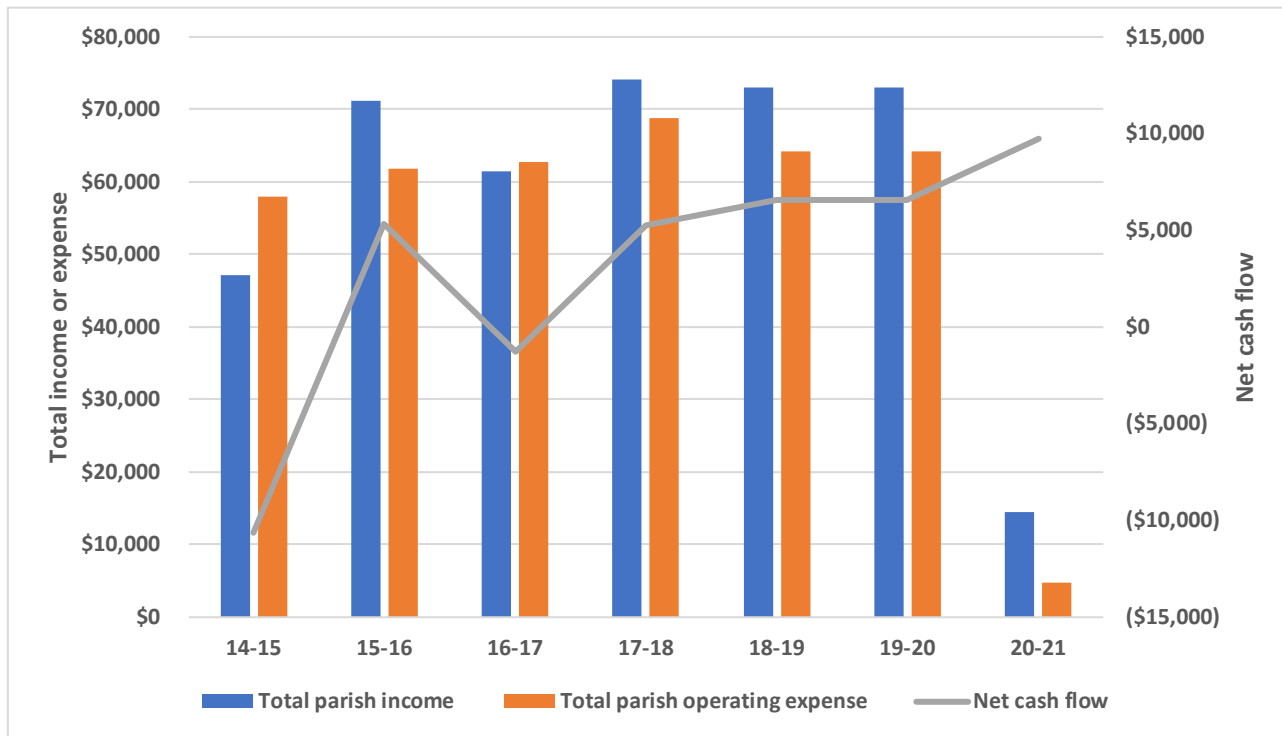
Source: Diocese of Erie



**Figure 28q**  
**St. Stephen of Hungary/Iglesia De San Esteban, Erie**

	Actual						
	14-15	15-16	16-17	17-18	18-19	19-20	20-21
Total parish income	\$47,231	\$71,193	\$61,513	\$74,105	\$73,040	\$73,040	\$14,538
Total parish operating expense	57,904	61,897	62,786	68,831	64,246	64,246	4,816
Balance	(10,673)	9,296	(1,273)	5,274	8,794	8,794	9,722
Total capital expenditures	0	3,995	0	0	2,200	2,200	0
Net loan proceeds (principal)	0	0	0	0	0	0	0
<b>Net cash flow</b>	<b>(\$10,673)</b>	<b>\$5,301</b>	<b>(\$1,273)</b>	<b>\$5,274</b>	<b>\$6,594</b>	<b>\$6,594</b>	<b>\$9,722</b>

Source: Diocese of Erie



**Observations:**

1. The deanery parishes have managed their finances well. Many have avoided deficit budgets, managed debt when needed, and addressed capital improvements.
2. Within the deanery, there is a range of sizes of parish budgets.
3. The average Catholic household in the United States contributes 1.1% of their gross income to the Church. Based on the deanery area average household income, the average contribution to a parish would be \$700 per household.
4. Catholic parishes tend to be older and wealthier than the population where the parish is located so contributions may actually be more than the area average would project.

## IV. TOP TEN DATA POINTS

The top ten data points can be looked upon as the summary of the Report. These data points can help to form a picture of the reality and potential future for the area. In addition, this knowledge can focus attention on the action which may need to be taken to bring about greater vitality in the deanery parishes.

### 1. **Population Growth**

After a decade of population decline, population growth is projected and forecasted for the next 10 years. The number of residents will grow by 6,000 with potential for over 2,000 new Catholics in the area.

### 2. **More children**

The number of children between the ages of 0 and 4 is forecasted to more than double between 2026 and 2031. This significant increase should impact the number of baptisms, religious education enrollments, and Catholic school enrollments.

### 3. **More seniors**

One of every four residents in the deanery is projected and forecasted to be aged 65 and over. This is an opportunity for parishes to review and expand their ministries to the oldest members of their communities.

### 4. **Hispanic Ministry**

The Hispanic or Latino population in the deanery is projected to increase to 4,629 residents by 2026. Half of the population group is Catholic. Parish racial and ethnic data does not indicate any sizable memberships at deanery parishes.

### 5. **Housing units**

Even with a projection of population growth and low vacancy rates in the area, there are no indications of residential or rental building construction. With continued growth forecasted for 2031, there may be more development in the second half of the decade.

### 6. **Religious involvement**

Two-thirds of all residents are not involved in any religious congregation or community. The area has high potential for evangelization activity.

### 7. **Percentage of Catholics**

35.9% of all residents are self-identified Catholics. 23,800 are registered at parishes in the deanery. There are another 30,960 Catholics who are not registered in any deanery parish.

### 8. **Membership decline**

Parish membership has steadily declined in the deanery. People have moved out of the area. There are more funerals in parishes than baptisms. More attention and effort must be given to community building in parishes.

### 9. **Mass attendance**

The percentage of parishioners who attend Sunday Mass is 24.5%. Mass attendance is the main indicator of parish vitality.

## 10. Parish finances

Some parishes with small memberships are struggling financially. Parishes need to identify ways to share resources with other parishes and create financial efficiencies. The largest transfer of wealth in the history of the world thanks to the baby boom generation is currently underway and parishes need to be proactive in developing strategies for planned giving efforts and establishing or growing endowment funds.

